



# **Formal Consultation Document**

**Proposal to close Ysgol Rhewl as of the 31<sup>st</sup> of August  
2017 with pupils transferring to Ysgol Pen Barras or  
Rhos Street School to coincide with the opening of the  
new school buildings.**

**February 2015**

## Table of Contents

No	Description	Page No
1.	Introduction	3
2.	Summary of the Proposal	4
3.	Consultation Process	4-5
4.	Making Your Views Known	6-7
5.	Power to Make a Decision	8
6.	Background to the Proposal	8-10
7.	Current Provision: Ysgol Rhewl	10-16
8.	Language Categorisation: Ysgol Rhewl	16-18
9.	Alternative Provision	18-24
10.	Additional Learning Needs	24-25
11.	Secondary Provision	25
12.	The Proposal in Detail: Description and Rationale	25-28
13.	Adequacy of Existing School Buildings and Facilities	29-32
14.	What is the Proposed Option?	33
15.	Alternative Options	34-37
16.	Admission Arrangements	37
17.	Transport Implications	38
18.	Staffing Implications	38
19.	What are the Financial Implications?	39
20.	What are the Disadvantages and Risks of the Proposal?	40
21.	Community and Welsh Language Impact Assessment	40-42
22.	Explanation of the Statutory Process	42-43
	Formal Consultation Response Form	44-47
	Appendix 1: Additional Information	

## 1. Introduction

1.1 The review of educational provision in the Ruthin area began in 2013. 11 Schools were included within the review, due to the complexities and interdependencies the review has been undertaken on a phased basis.

1.2 The Ruthin area faces a number of distinct challenges, including;

- *Surplus Places;*
- *Condition and suitability of school sites;*
- *Provision of mobile classrooms;*
- *School estate efficiency and sustainability.*

1.3 The objectives of the review are to address these challenges and ensure that the high standard of provision is maintained and strengthened for the future. The Council has been clear from the outset of the review that it is not linked to educational standards and attainment, as levels of education across the Ruthin area are good. The review and subsequent recommendations seek to maintain and strengthen this provision.

1.4 A series of recommendations have been made to Denbighshire's Cabinet since June 2013. This phase of the review has a focus on the town schools of Rhos Street School and Ysgol Pen Barras, inclusive of Ysgol Rhewl due to its proximity to the town.

1.5 It was agreed by Cabinet in June 2013 that no formal proposals should be made regarding Rhos Street School, Ysgol Pen Barras and Ysgol Rhewl until a further period of feasibility had been undertaken. This feasibility, to assess options for each school, has taken place during the autumn term 2014.

1.6 It has been proposed that Rhos Street School and Ysgol Pen Barras should be relocated from their current site to a new, purpose built facilities on the Glasdir site.

1.7 A detailed overview of the options explored for Ysgol Rhewl can be found in section 15 of this document.

## 2. Summary of the Proposal

- 2.1 It is being proposed that Ysgol Rhewl would close on the 31<sup>st</sup> of August 2017 with existing pupils transferring to either Ysgol Pen Barras and Rhos Street School to coincide with the opening of the new school buildings. The new school buildings will be located on the Glasdir site to the North of Ruthin.
- 2.2 The long term sustainability of Ysgol Rhewl has been considered as part of the wider town area as part of the Ruthin Area Review. The main drivers for proposals for the Ruthin town area have been the suitability and condition of school sites and surplus places within the town. It is considered that these drivers impact on the long term sustainability of Ysgol Rhewl.
- 2.3 In considering a range of options for the Glasdir site there was a need to assess the impact of the new facilities upon Ysgol Rhewl due to the proximity of the school, approximately 1.1 miles, from the Glasdir site. In view of pupil numbers and the long term need to invest in the building it is believed that closing the school and transferring pupils to either Ysgol Pen Barras or Rhos Street School would be the most sustainable option for the wider Ruthin town area.

## 3. Consultation Process

- 3.1 It was approved by Denbighshire's Cabinet on the 13<sup>th</sup> of January 2015 to formally consult on the proposal to close Ysgol Rhewl. The formal consultation is being carried out to ensure that all relevant parties have the opportunity to contribute to this important subject.
- 3.2 The formal consultation will take place from the **10<sup>th</sup> of February 2015 to the 23<sup>rd</sup> of March 2015.**
- 3.3 A series of formal consultation events will be taking place during this period. These will be arranged in the format of a 'parents evening' where attendees will be able to speak with officers on a one to one basis. Details of the meetings are included in the letter which is circulated.
- 3.4 This formal consultation document has been sent to a wide range of consultees, including the following statutory consultees;
- a. *Parents, teachers and ancillary staff of Ysgol Rhewl;*
  - b. *The Chair of Governors and School Council of the following schools;*
    - i. *Ysgol Rhewl;*
    - ii. *Ysgol Pen Barras;*

- iii. *Rhos Street School;*
  - iv. *Ysgol Borthyn;*
  - v. *Ysgol Carreg Emlyn;*
  - vi. *Ysgol Gellifor;*
  - vii. *Ysgol Llanbedr DC;*
  - viii. *Ysgol Bro Cinmeirch.*
- c. *Church in Wales Diocese of St. Asaph and the Roman Catholic Diocese of Wrexham;*
  - d. *Head teachers and Chairs of Governors of all Denbighshire Schools;*
  - e. *Flintshire County Council;*
  - f. *Conwy County Borough Council;*
  - g. *Independent nursery providers in the Ruthin area;*
  - h. *Denbighshire Children and Young People's Partnership and the Early Years Development and Childcare Partnerships;*
  - i. *All Denbighshire County Councillors;*
  - j. *Assembly Members and Members of Parliament representing the areas affected by the proposal;*
  - k. *Llanynys Community Council;*
  - l. *Ruthin Town Council;*
  - m. *The Welsh Government Ministers;*
  - n. *Estyn;*
  - o. *Relevant teaching and staff trade unions;*
  - p. *Taith;*
  - q. *Gwasanaeth Effeithiolrwydd Ysgolion (GWE);*
  - r. *North Wales Police and Crime Commissioner.*

3.5 A supplementary version of this consultation document has been produced for children and young people who are likely to be affected by the proposal. This document will be made available at the schools named within this proposal. The children and young people's document has been specifically written to enable children and young people to understand and engage with the consultation process.

3.6 Consultation events will also be held with pupils at Ysgol Rhewl, Ysgol Pen Barras and Rhos Street School.

3.7 This document, the children and young people's document and relevant supporting documentation has been published on Denbighshire County Council's website and can be viewed by following this link;

[www.denbighshire.gov.uk/modernisingeducation](http://www.denbighshire.gov.uk/modernisingeducation)

## 4. Making Your Views Known

4.1 There are a number of ways in which you can make your views known to us. These are outlined below with relevant details for submitting your views.

### **In Person**

The dates and times of the consultation meetings are included within the covering letter. Meetings will be held with staff, parents, pupils and the Governing Body.

The parents meeting will be held in a parents evening format. This allows for attendees to speak with officers on a 1-2-1 basis. To ensure that each attendee has the opportunity to make their views known there is a requirement to book a place at the meeting.

To book a place please email [modernisingeducation@denbighshire.gov.uk](mailto:modernisingeducation@denbighshire.gov.uk) or call 01824 706127. A confirmation email will be sent to you to confirm your booking.

### **In Writing**

You can complete the form electronically by following this link;

<https://www.surveymonkey.com/r/YsgolRhewlEnglishVersion>

If you wish to make a further response in writing please submit your views by using the postal details below.

A response form is attached to this document; this can be completed and submitted by post to;

FAO Modernising Education Team, Denbighshire County Council, Wynnstay Road,  
Ruthin, LL15 1YN

Or this can be scanned to;

[modernisingeducation@denbighshire.gov.uk](mailto:modernisingeducation@denbighshire.gov.uk)

### **Children and Young People**

A consultation event will be held with members of the School Council. This will be facilitated by an officer from Denbighshire whose role includes engagement and consultation specifically designed for children and young people.

- 4.2 Please ensure that all views are submitted by the 23/03/2015. Any late submissions may not be included within analysis for the formal consultation report.
- 4.3 Additionally, any views or response submitted via any other postal or email address may not be included within analysis for the formal consultation report.
- 4.4 At the end of the formal consultation period all views will be collated for consideration before any recommendation is made to proceed to the next stage.
- 4.5 Please note that responses submitted as part of the Formal Consultation **will not** be counted as objections to the proposal. Objections can only be made if a Statutory Notice is published. If a Statutory Notice is published objections can only then be registered.
- 4.6 A formal consultation report, and all responses, will be collated and presented to Cabinet in May 2015. The report will also contain a recommendation from officers.
- 4.7 It is Cabinet who will make a decision whether to proceed to the next stage and issue a statutory notice.

#### **School Organisation Proposal Process**

**Recommendation:** A recommendation is made to Denbighshire Cabinet to formally consult- January 2015.

**Formal Consultation:** A period of formal consultation will take place between 10/02/2015 and 23/03/2015. During this time interested parties can make their views known regarding the proposal.

**Formal Consultation Report:** At the end of the formal consultation period responses will be collated and presented to Cabinet in the form of a Formal Consultation Report including a recommendation from officers. This will be published on the Denbighshire website.

**Statutory Notice:** If the recommendation is to move to the next stage of the process Cabinet will need to agree it. If this is agreed a statutory notice will be issued. The statutory notice period must last for 28 days. It will be published on DCC website and posted at the entrance of the school.

**Objection Report:** Should a statutory notice be published and objections received these objections will be collated to form an objection report. The report will contain a summary of each objection made and the authority's response. The report will be required to be published before the end of 7 days beginning with the day of any determination of the proposal.

## 5. Power to Make a Decision

5.1 Denbighshire County Council is permitted to publish proposals to close a school according to the School Standards and Organisation (Wales) Act 2013<sup>i</sup>. Accordingly, the formal publication of the closure of a school may be carried out by the Council following the correct statutory procedure. The School Organisation Code<sup>ii</sup> sets out the procedure that is to be followed.

## 6. Background to the Proposal

6.1 Denbighshire County Council's Cabinet approved the Modernising Education Policy Framework<sup>iii</sup> in January 2009 to provide a platform upon which to review existing school provision.

6.2 The Council is committed to providing a first class education for all children and young people in the county. As part of this commitment, the Council has agreed that 'modernising education provision' is a corporate priority because we recognise the importance of having school buildings, learning environments and resources that meet the needs of 21<sup>st</sup> Century Wales.

6.3 We know that we have to change and modernise education provision throughout the County, as improvements in education cannot be sustained without changes to the way education is provided. Schools need to be able to provide the best possible learning experience so that children and young people in Denbighshire have the widest opportunities available to them and are able to reach their full potential.

6.4 In November 2012 Denbighshire County Council's Cabinet approved the commencement of an informal consultation on the future of primary education in the Ruthin area. The informal consultation document highlighted a number of issues that needed to be addressed to achieve long term sustainability. These include;

- *Sustainability of Schools and High Quality Provision;*
- *Surplus Places;*
- *Condition and Suitability of school buildings (incl. use of mobile accommodation);*
- *Recruitment of Headteachers;*
- *Demand for Welsh Medium education.*



- 6.5 The informal consultation ended on the 22<sup>nd</sup> of March 2013 and Denbighshire County Council has carefully considered the issues raised during this period. In total over 63 letters and emails were received from stakeholders together with 195 questionnaires completed by parents. The findings of the informal consultation exercise have been compiled by the Council and were published on the website as part of the decision making process.
- 6.6 It was recommended to Cabinet in June 2013 that no formal proposals should be progressed for the town schools until a period of detailed feasibility had been undertaken. The feasibility works were undertaken in the autumn term 2014. The feasibility works were able to provide a more detailed analysis of 3 sites, namely the Ysgol Rhewl site, the current shared site for Rhos Street School and Ysgol Pen Barras and the Glasdir site.
- 6.7 The Council's preferred option is to relocate Ysgol Pen Barras and Rhos Street School to new, purpose built facilities on the Glasdir site.
- 6.8 The Council in bringing forward this proposal is of the view that the changes proposed would be of long term benefit to children and young people within the Community area of Rhewl. This consultation document within Section 7 provides information regarding current educational standards at Ysgol Rhewl. The document within Section 13 also provides commentary upon the adequacy of the existing school buildings and facilities. In considering these elements the Council believes that although the current provision at Ysgol Rhewl provides a good standard of education, predominately through the medium of English, there are in considering the schools long term viability, concerns that the size of the school may impact upon the ability of the school to respond to increased curriculum demands. The current adequacy of the accommodation is also believed to be a potential barrier to maintaining the status quo from a long term perspective.
- 6.9 In developing the proposal the local authority has carefully considered the likely impact of the proposal upon outcomes, provision and leadership and management and is of the view that the expected benefits outweigh the disadvantages when compared to the status quo. Section 12 provides a detailed commentary upon the impact of the proposals upon these key areas and overall highlights many advantages through the ability to offer more age appropriate classes, the opportunity to access a more in-depth curriculum offer through a wider specialism of staff and to provide a more developed senior leadership team structure to oversee the delivery of education. The proposed investment in new accommodation for Ysgol Pen Barras and Rhos Street School as the named alternative schools would also allow pupils who transfer from Ysgol Rhewl to be educated in modern purpose built facilities. In Section 20 the document highlights potential disadvantages to the proposal and these are developed further also within the Community Impact

Assessment. However Denbighshire in developing these proposals are of the view that the benefits outweigh the disadvantages when considering the long term needs of pupils from the Rhewl Community and also the wider educational interests of all pupils in the area.

6.10 This proposal is part of a reorganisation of primary schools in the Ruthin area, this proposal is moving forward at the same time as;

- i. The proposal for a new area school to replace Ysgol Llanfair Dyffryn Clwyd and Ysgol Pentrecelyn;*
- ii. A new area school building for Ysgol Carreg Emlyn, which is currently operating across two sites in Clocaenog and Cyffylliog;*
- iii. A new purpose built educational facility that will enable the relocation of Ysgol Pen Barras and Rhos Street School.*

## 7. Current Provision: Ysgol Rhewl

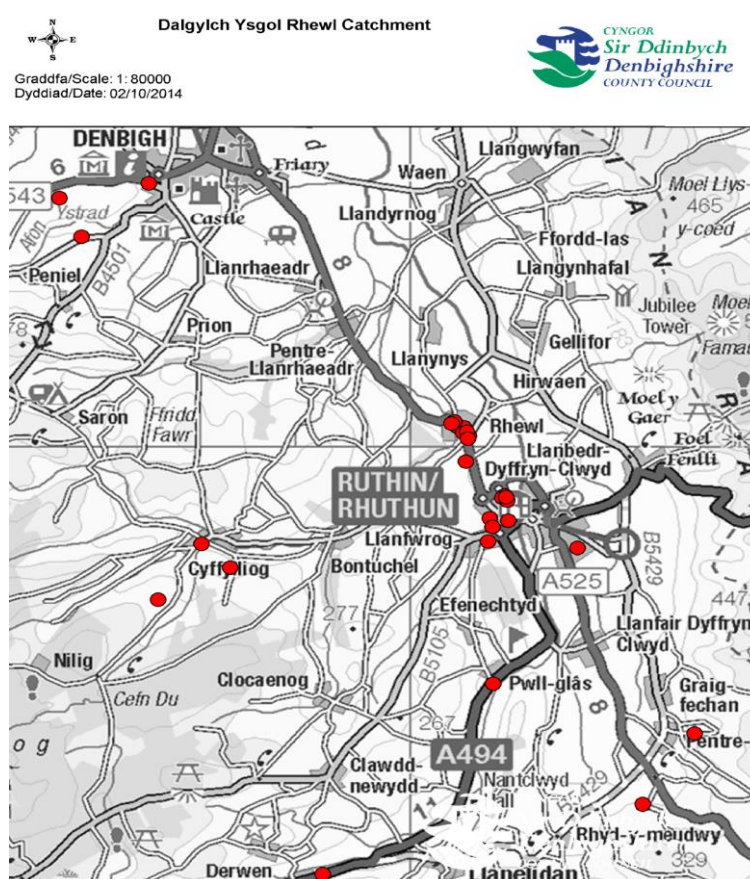
7.1 This section details the current provision at Ysgol Rhewl.

7.2 Ysgol Rhewl is located centrally within the village of Rhewl with the Western boundary of the site bordering the A525. The school serves an age range of 3-11. The school is identified as a Category 2- Dual Stream primary school. This is where two types of language provision (English and Welsh) exist side by side and parents/pupils opt for either the mainly Welsh medium or mainly English medium provision.

7.3 As of the September 2014 school census (PLASC) there were 53 full time pupils and 3 part time (nursery) pupils attending Ysgol Rhewl. The table below displays the full and part time pupil numbers over a ten year period;

	2004		2005		2006		2007		2008		2009		2010		2011		2012		2013		2014	
Pupil No.	FT	P T	FT	P T	FT	P T	FT	P T	FT	P T	FT	P T	FT	P T	FT	P T	FT	P T	FT	P T	FT	P T
Ysgol Rhewl	28	2	33	8	41	6	38	3	34	10	41	9	34	6	34	4	37	8	55	5	50	4

7.4 38.5% of current pupils are from the village of Rhewl and the immediate area. 61.5% of pupils live outside of the village. The map below demonstrates the catchment for the academic year 2014-2015;



7.5 The overall full time capacity of the school building has been calculated at 82 pupils. As of September 2014 there were 53 full time pupils and 3 part time pupils. There is a current surplus of 29 full time pupil places, equivalent to 35.4%. The admission number for the school is 11.

7.6 The school has two large classrooms and operates mixed year groups. The nursery and Foundation Phase classes are located within Classroom 1 and the Key Stage 2 pupils are located within Classroom 2. The large classrooms can be subdivided for smaller teaching areas. The table below displays the breakdown of pupils by year group;

Nursery	Reception	Year 1	Year 2	Year 3	Year 4	Year 5	Year 6
3	5	6	9	8	5	9	11
<b>23 (3 PT/20 FT)</b>				<b>33</b>			

7.7 The pupil teacher ratio for the last academic year was 15.

7.8 Each Spring Denbighshire undertakes a round of pupil projections using the most current pupil data. Pupil projections are suggesting a decrease in the number of pupils on roll over the coming 5 year period. The projected full time pupil numbers are displayed below;

School	2015	2016	2017	2018	2019
Ysgol Rhewl	50	46	42	41	39

7.9 The deadline for Reception applications for the next academic year (2015/2016) was at the end of November 2014. To date there has been 3 applications for Reception and 1 application for the nursery class as of the start of February 2015.

7.10 The table below displays the level of achievement and attainment, alongside local and national averages, at the end of the Foundation Phase for Ysgol Rhewl over the last 5 year period;

	CSI*		FPOI*		
	2010	2011	2012	2013	2014
<b>Ysgol Rhewl</b>	100%	100%	66.7%	83.3%	85.7%
<b>Local Average</b>	82.4%	79.8%	86.4%	84.9%	86.1%
<b>National Average</b>	81.6%	82.7%	80.5%	83%	85.2%

*\*2010-2011 achieving Core Subject Indicator- CSI. CSI at Key Stage 1 replaced by Foundation Phase Outcome Indicator- FPOI.*

7.11 The table below provides benchmarking information regarding pupils achieving the expected outcomes at the end of the Foundation Phase areas of learning. Benchmarking compares the performances of a family of schools who have similar levels of Free School Meal (FSM) entitlement;

% of Pupils achieving expected outcome	2012	2013	2014
<b>Rhewl</b>	<b>66.7%</b>	<b>83.3%</b>	<b>85.7%</b>
<b>Highest</b>	<b>100.0%</b>	<b>100.0%</b>	<b>100.0%</b>
<b>Upper Quartile</b>	<b>89.8%</b>	<b>90.0%</b>	<b>95.1%</b>
<b>Median</b>	<b>82.7%</b>	<b>83.2%</b>	<b>90.0%</b>
<b>Lower Quartile</b>	<b>72.7%</b>	<b>75.1%</b>	<b>83.3%</b>
<b>Lowest</b>	<b>33.3%</b>	<b>28.6%</b>	<b>0.0%</b>

7.12 The table below displays the level of achievement and attainment at the end of Key Stage 2 for Ysgol Rhewl over the last 5 year period;

	% achieving Level 4+ CSI at Key Stage 2*				
	2010	2011	2012	2013	2014
Ysgol Rhewl	100%	100%	100%	100%	75%
Local Average	78.1%	82.3%	83.5%	86%	86.6%
National Average	78.2%	80%	82.6%	84.3%	86.1%
Family Average	73.7%	74.9%	80.9%	84.1%	84.2%

\*CSI- Core Subject Indicator

7.13 It is important to note that the numbers of pupils assessed in each cohort has been relatively low, therefore a meaningful comparison with local and national averages is not always possible.

7.14 The SEN averages for the school for the past 5 year period are displayed in the table below alongside local and national averages;

	2010	2011	2012	2013	2014
Rhewl- School Action	N/A*	N/A	18.8%	N/A	N/A
LA School Action Av.	12.2%	12.9%	12.8%	12.5%	12.5%
Wales School Action Av.	15.5%	15.2%	15.6%	15.2%	15.1%
Rhewl- School Action Plus	N/A*	N/A	N/A	15.6%	N/A
LA School Action Plus Av.	11.5%	10.6%	11.8%	12.2%	12.8%
Wales School Action Av.	8.5%	8.7%	8.9%	9.2%	8.8%
Rhewl- Statemented	N/A*	N/A	N/A	N/A	N/A
LA Statemented Av.	1.4%	1.4%	1.1%	0.9%	1.1%
Wales Statemented Av.	2.0%	1.9%	1.8%	1.7%	1.7%

\* Data is confidential due to small number of pupils within cohort. Disclosing the data may lead to identification of individual pupils.

7.15 Further information regarding Additional Learning Needs and the impact of the proposal on ALN pupils in Section 10 of this document.

7.16 The Free School Meal (FSM) averages for the school for the past 5 years are displayed in the table below alongside local and national averages;

School	2010	2011	2012	2013	2014
Ysgol Rhewl	20.5%	20.7%	21.6%	16.8%	10.7%
Local Av.	18.4%	20.0%	20.9%	21.3%	21.2%
Wales Av.	18.9%	20.0%	20.6%	20.8%	20.5%

- 7.17 Further information regarding attainment, benchmarking and contextualised information relating to the school is available to view on the MyLocalSchool website<sup>iv</sup>.
- 7.18 The schools last Estyn inspection took place in May 2011, the inspection report commented as follows;

### Context

*Ysgol y Rhewl primary school is located in the small village of Rhewl near Ruthin in Denbighshire. It provides education for pupils between three and 11 years of age. The intake of pupils represents the full ability range. All pupils come from homes where English is the main language. There are no pupils from minority ethnic backgrounds. Pupils are taught mainly through the medium of English and learn Welsh as a second language. However, the school is a designated bilingual school, which caters for both English and Welsh medium education according to demand.*

*There are 34 full time pupils on roll and a further four children attend the nursery part-time. Since the relocation of the village playgroup, the school also admits pre-nursery children. This provision, 'Pili Pala', is delivered in the Foundation Phase classroom and includes children from other areas locally where this provision is not available. There has been an increase in the number of pupils entitled to free school meals over the past three years. The current figure is about 26% of pupils, which is higher than the all-Wales average of just under 20% for primary schools.*

*The school has identified nearly a third of pupils as having additional learning needs. No pupils have a statement of special educational needs. The current headteacher has been in post since September 2007.*

*The 2010-2011 individual school budget per pupil for Ysgol y Rhewl primary school is £4,574, which compares with a maximum of £18,610 and a minimum of £2,626 for primary schools in Denbighshire. The school has the 14th highest budget per pupil out of the 53 primary schools in Denbighshire.*

### Summary

<b>The school's current performance</b>	<b>Good</b>
<b>The school's prospects for improvement</b>	<b>Good</b>

<b>Key Question</b>	<b>Judgement</b>
How good are outcomes?	<b>Good</b>
How good is provision?	<b>Good</b>
How good are leadership and management?	<b>Good</b>

<b>Current Performance</b>	<b>Prospects for improvement</b>	<b>Recommendations</b>
----------------------------	----------------------------------	------------------------

<p>Current performance is good because of;</p> <ul style="list-style-type: none"> <li>• The school's inclusive ethos and the warm and friendly school community;</li> <li>• Pupils' good standard of achievement and their ability to use skills in their work across the curriculum;</li> <li>• A good range of learning activities that captures and sustains the interest of pupils;</li> <li>• High level of attendance and behaviour, with pupils applying themselves well to learning;</li> <li>• The way the school successfully promotes pupils' wellbeing; and</li> <li>• Effective procedures for tracking pupils' progress and the quality of provision for pupils in need of additional support, especially in literacy.</li> </ul>	<p>Prospects for improvement are good because;</p> <ul style="list-style-type: none"> <li>• A good track record in ensuring improved outcomes for pupils;</li> <li>• The clear commitment to continuous improvement in provision and outcomes;</li> <li>• A clear understanding of aspects of provision in need of further development and the willingness to take account of the views of Governors, parents and pupils;</li> <li>• A well-structured school development plan that identifies clear and appropriate proposals for school development;</li> <li>• The way the schools' Governing Body acts as a critical friend; and</li> <li>• A commitment to working in partnership with other local schools as a professional learning community.</li> </ul>	<p>In order to improve the school needs to;</p> <p><b>R1:</b> Ensure that learning activities extend pupils of all abilities in mainstream classes, especially pupils of higher ability in key stage 2.</p> <p><b>R2:</b> Improve pupil's understanding of what to do to improve the quality of their work, especially the quality of marking and pupils' involvement in self and peer assessment.</p> <p><b>R3:</b> Further develop the planning and implementation of the provision of skills, to ensure continuity and progression of pupils' skill development.</p> <p><b>R4:</b> Improve senior management's role in evaluating continuity and progression in provision and pupils' achievement across the school.</p>
-------------------------------------------------------------------------------------------------------------------------------------------------------------------------------------------------------------------------------------------------------------------------------------------------------------------------------------------------------------------------------------------------------------------------------------------------------------------------------------------------------------------------------------------------------------------------------------------------------------------------------------------------------------------------------------------------------------------------------------------------	------------------------------------------------------------------------------------------------------------------------------------------------------------------------------------------------------------------------------------------------------------------------------------------------------------------------------------------------------------------------------------------------------------------------------------------------------------------------------------------------------------------------------------------------------------------------------------------------------------------------------------------------------------------------------------------------------------------------------------------------------------------	-----------------------------------------------------------------------------------------------------------------------------------------------------------------------------------------------------------------------------------------------------------------------------------------------------------------------------------------------------------------------------------------------------------------------------------------------------------------------------------------------------------------------------------------------------------------------------------------------------------------------------------------------------------------------------------------------------------------------------

#### Estyn Judgements Definitions Key

Framework Key Questions
How good are the outcomes?
How good is the provision?
How good is the leadership and management?
Judgements
<b>Excellent-</b> Many strengths, including significant examples of sector leading practice.
<b>Good-</b> Many strengths and no important areas requiring significant improvement.
<b>Adequate-</b> Strengths outweigh areas for improvement.
<b>Unsatisfactory-</b> Important areas for improvement outweigh strengths.

7.19 The 'Pili Pala' playgroup is located at the school; the playgroup has two sessions per day (morning and afternoon) for children aged 2 years 6 months and over providing wrap-around-care for parents. The playgroup occupies a space within the Nursery and Foundation Phase classroom. At the last inspection of the playgroup in 2013 there were 5 children registered, 2 of whom received early years funding.

7.20 The proposed alternative provision, Rhos Street School and Ysgol Pen Barras, offer wrap-around-care in the form of playgroups, breakfast clubs and after school facilities. The

2014 Denbighshire Childcare Sufficiency Assessment for Denbighshire found that there was sufficient childcare places available within the Ruthin area with a number of surplus of places. It is not likely that the proposal will have a negative impact on access to childcare as there are sufficient places available, inclusive of early years funded places.

## 8. Language Categorisation: Ysgol Rhewl

- 8.1 Ysgol Rhewl is a Category 2 school. Category 2 schools are defined as dual stream primary schools. The following definition has been taken from the 'Defining Schools According to Welsh Medium Provision' information document issued by the Welsh Government<sup>v</sup>;

### Dual Stream Primary School Definition

**Curriculum:** *Two types of provision exist side by side in these schools. Parents/pupils opt either for the mainly Welsh medium or mainly English medium provision which is usually delivered as in categories 1 and 5 respectively.*

**Language of the School:** *Both Welsh and English are used in the day to day business of the school. The language of communications with the pupils is determined by the nature of the curricular provision, but in some schools high priority is given to creating a Welsh language ethos throughout the school. The school communicates with parents in both languages.*

**Outcomes:** *For pupils in the Welsh stream, normal expectations are as for Category 1. For pupils in the English medium stream, normal expectations are as for Category 5.*

- 8.2 The language categorisation of schools within Denbighshire is currently being audited by the Welsh in Education Strategic Group. It is expected that a report on the findings with recommendations will be presented to Denbighshire County Council scrutiny committee in the Spring of 2015.
- 8.3 In the most recent Estyn inspection (May 2011) for Ysgol Rhewl the language provision of the school was described as primarily through the medium of English with Welsh learnt as a second language.
- 8.4 The table below displays information regarding the fluency of pupils in the Welsh language;



	Pupils on roll (taken from PLASC* Jan 2014 return)		
	Fluent in Welsh	Can speak Welsh but not fluent	Cannot speak Welsh
Ysgol Rhewl	0	49	1

\*PLASC-annual school census

8.5 The table below displays the information on pupils' home language;

	Full-time pupils (taken from PLASC* Jan 2014 return)		
	Welsh speaking homes	English speaking homes	Bi-lingual
Ysgol Rhewl	13	37	0

8.6 For the period 2010-2014 no pupils at the school were assessed as Welsh first language at the end of Key Stage 2. The table below displays the percentage of pupils gaining Level 4 and above in Welsh second language at the end of Key Stage 2;

2010	2011	2012	2013	2014
N/A	50%	100%	100%	50%

8.7 The table below displays the numbers of pupils who have been assessed either through English or Welsh at the end of Key Stage 2 since 2007;

Language	2007/2008	2008/2009	2009/2010	2010/2011	2011/2012	2012/2013	2013/2014
English	4	5	1	2	3	7	4
Welsh	1	1	1	0	0	0	0
Total Pupils	5	6	2	2	3	7	4

8.8 The majority of pupils transfer from Ysgol Rhewl to Ysgol Brynhyfryd for secondary education. Ysgol Brynhyfryd provides a bilingual provision offering a Welsh Stream, English Stream and a Bilingual Stream. All pupils from Ysgol Rhewl, almost without exception, transfer to Ysgol Brynhyfryd for their secondary education. The table below displays the language medium in which pupils from Ysgol Rhewl are taught;

Year	Welsh 1 <sup>st</sup> Lang	Welsh 2 <sup>nd</sup> Lang	Total
2009	1	5	6
2010	0	2	2
2011	0	2	2
2012	0	3	3
2013	0	7	7
2014	0	4	4
Total	1	23	24

8.9 The following table shows the outcomes at Key Stage 2 in English, Welsh First Language and Welsh Second Language for the last academic year;

	English	Welsh 1 <sup>st</sup> Language	Welsh 2 <sup>nd</sup> Language
<b>Ysgol Rhewl*</b>	100%	N/A	50%
<b>Ysgol Pen Barras</b>	93.1%	93.1%	N/A
<b>Rhos Street School</b>	100%	N/A	73.1%
<b>Denbighshire</b>	89.2%	85.1%	74%
<b>Wales</b>	88.4%	88.1%	73.1%

\* Numbers of pupils assessed in each cohort has been relatively low, therefore a meaningful comparison with local and national averages is not always possible.

## 9. Alternative Provision

9.1 Should the current proposal proceed, Denbighshire County Council would wish to see pupils of Ysgol Rhewl transfer to either Ysgol Pen Barras (Welsh Medium Category 1) or Rhos Street School (English Medium Category 5), dependent on parental preference for language medium, to ensure that they continue to receive education to a consistently high standard. It is possible that parents may seek an alternative provision for their child/children. The possible alternative provision has been identified using current available data on language preference and home locations of existing pupils.

School	Type	FT Pupils*	PT Pupils*	FT Places	PT Places	Distance from Ysgol Rhewl
Ysgol Pen Barras, Ruthin LL15 1DY	Welsh medium Category 1, Community	223	36	252	36	Approx. 2.5miles**
Rhos Street School, Ruthin LL15 1DY	English medium Category 5, Community	151	14	189	23	Approx. 2.5miles**

\*As of September 2014- PLASC. \*\*To existing site, approx. 1.1miles to proposed Glasdir development.

9.2 The Council proposes to provide new facilities for Ysgol Pen Barras and Rhos Street School on the Glasdir site in Ruthin. The proposed capacity of the schools would approximately be 270 full time pupils (Ysgol Pen Barras) and 180 full time pupils (Rhos Street School). The proposed admission number based on the approximate capacities would be 35 and 25 respectively. The admission capacity for nursery provision would be expected to be 35 and 25 respectively.

9.3 Denbighshire County Council have identified other schools in the area that may be impacted should parents wish to choose an alternative provision. It is deemed reasonable to assume, based on chosen offer of language medium and the home locations and current catchment of pupils, that the following schools may be impacted should the proposal be implemented;

School	Type	FT Pupils*	PT Pupils*	FT places	PT places	Distance (From
--------	------	------------	------------	-----------	-----------	----------------

						<b>Ysgol Rhewl)</b>
Ysgol Borthyn, Ruthin LL15 1NT	English medium Category 5, VC CiW	142	20	142	20	Approx 1.3 miles
Ysgol Gellifor, Gellifor LL15 1SG	English medium Category 5, Community	87	7	91	10	Approx 1.4 miles

\*As of September 2014- PLASC.

9.4 Other types of provision are also available on the periphery of the catchment area for Ysgol Rhewl, and include;

<b>School</b>	<b>Type</b>	<b>FT Pupils**</b>	<b>PT Pupils**</b>	<b>FT Places</b>	<b>PT Places</b>	<b>Distance (from Ysgol Rhewl)</b>
Ysgol Llanbedr, Llanbedr LL15 1SU	English medium Category 5, VC CiW	22	22	54	11	Approx. 3.2 miles
Ysgol Llanfair DC*, Llanfair DC LL15 2RU	Dual Stream Category 2, VC CiW	92	14	113	14	Approx. 4.3 miles
Ysgol Carreg Emlyn, Clocaenog/Cyffylliog (split site school until 2017) LL15 2AY/LL15 2DL	Welsh medium Category 1, Community	60	14	80	11	Approx. 4.3 miles (Cyffylliog) Approx. 6 miles (Clocaenog)
Ysgol Bro Cinmeirch, Llanrhaeadr LL16 4NL	Welsh medium Category 1, Community	69	17	80	11	Approx. 2.9 miles

\*Ysgol Llanfair DC forms part of an additional school organisation proposal. Ysgol Llanfair DC is proposed to close to form a new area school in the Llanfair DC area for pupils of Ysgol Llanfair DC and Ysgol Pentrecelyn.

9.5 It should be noted that some pupils are travelling to Ysgol Rhewl beyond the 'natural catchment' however the pupil numbers are small and geographically spread so any impact on schools in those areas would be negligible.

9.6 Further information is provided in Appendix 1, which compares Ysgol Rhewl, Rhos Street School and Ysgol Pen Barras with other reasonable alternative provision. Information contained with Appendix 1 gives regard to;

- *Educational Attainment (Foundation Phase, Key Stage 2);*
- *Free School Meals;*
- *Additional Learning Needs Data;*
- *Current full time pupil numbers (September 2014 PLASC);*
- *Current part time nursery pupil numbers (September 2014 PLASC);*
- *Pupil numbers for the past 5 year period;*
- *Projected pupil numbers for the coming 5 year period;*

- *Estyn report summaries for each school (that are not contained within the main document);*
- *Information regarding the condition and suitability of school building and sites.*

9.7 The information contained within Appendix 1 suggests that all alternative provision will at least maintain the standard of education provision for pupils of Ysgol Rhewl. All alternative schools have surplus places and will be able to continue to deliver the full curriculum at the foundation phase and Key Stage 2.

9.8 This section has a focus on educational provision at the named schools within the proposal, Rhos Street School and Ysgol Pen Barras. Information on educational outcomes and provision is also included within Appendix 1 for comparative purposes.

9.9 The table below displays the Foundation Phase outcomes for Ysgol Rhewl, Rhos Street School and Ysgol Pen Barras, this is intended as a comparative tool for parents;

	CSI*		FPOI*		
	2010	2011	2012	2013	2014
<b>Ysgol Rhewl</b>	100%	100%	66.7%	83.3%	85.7%
<b>Rhos Street School</b>	88.9%	90%	95.2%	100%	100%
<b>Ysgol Pen Barras</b>	100%	97.1%	95.5%	94.7%	93.5%
<b>Sir Ddinbych/Denbighshire Average</b>	82.4%	79.8%	86.4%	84.9%	86.1%
<b>Wales Average</b>	81.6%	82.7%	80.5%	83%	85.2%

*\*2010-2011 achieving Core Subject Indicator- CSI. CSI at Key Stage 1 replaced by Foundation Phase Outcome Indicator- FPOI.*

9.10 The table below displays the Key Stage 2 outcomes for Ysgol Rhewl, Rhos Street School and Ysgol Pen Barras, this is intended as a comparative tool for parents;

	% achieving Level 4+ CSI at Key Stage 2*				
	2010	2011	2012	2013	2014
<b>Ysgol Rhewl</b>	100%	100%	100%	100%	75%
<b>Rhos Street School</b>	93.5%	93.3%	96.6%	92.6%	100%
<b>Ysgol Pen Barras</b>	97.1%	90%	96.8%	94.3%	89.7%
<b>Sir Ddinbych/Denbighshire Average</b>	78.1%	82.3%	83.5%	86%	86.6%
<b>Wales Average</b>	77%	80%	82.6%	84.3%	86.1%

*\*Core Subject Indicator*

9.11 The pupil teacher ratios at Rhos Street School, Ysgol Pen Barras and Ysgol Rhewl for the last academic year are displayed below;

School	Pupil/Teacher Ratio
Rhos Street School	18.5
Ysgol Pen Barras	19.2
Ysgol Rhewl	15

9.12 The 3 year average for Free School Meal entitlement (FSM) for Rhos Street School, Ysgol Pen Barras and Ysgol Rhewl is included in the table below for comparative purposes;

	2010	2011	2012	2013	2014
<b>Rhos Street School</b>	6.3%	8.9%	11.3%	11.1%	12%
<b>Pen Barras</b>	0.7%	1.3%	1.3%	1.3%	1.6%
<b>Ysgol Rhewl</b>	20.5%	20.7%	21.6%	16.8%	10.7%
<b>Local Av.</b>	18.4%	20.0%	20.9%	21.3%	21.2%
<b>Wales Av.</b>	18.9%	20.0%	20.6%	20.8%	20.5%

9.13 The most recent Estyn inspection for Rhos Street School took place in March 2013. The Estyn report commented as follows;

#### Context

*Rhos Street Community Primary School is situated in Ruthin and shares a site with a Welsh medium primary school. Pupils are from a wide range of backgrounds and live in the town and the surrounding villages.*

*The school caters for pupils between the ages of three and 11. Currently, 169 pupils attend the school, including 13 who attend the nursery on a part-time basis. Pupil numbers have fallen since the last inspection. The school is organised into eight single-age classes. No pupils speak Welsh as a first language and a very few pupils receive support for English as an additional language. Fourteen per cent of pupils come from an ethnic-minority community.*

*Eight per cent of pupils are entitled to free school meals, which is lower than the local authority and all-Wales averages. The school has identified 9% of pupils as having additional learning needs and a few pupils have a statement of special educational need.*

*The school shares several facilities with the Welsh medium school, including a computer room, hall, canteen and field. Pupils in Year 5 and Year 6 are taught in a building separated from the main school by the playing field.*

*The headteacher has been in post since April 2009 and the school was last inspected in February 2007. The individual school budget per pupil for Rhos Street Primary School in 2012-2013 means that the budget is £3,810 per pupil. The maximum per pupil in the primary schools in Denbighshire is £9,659 and the minimum is £3,064. Rhos Street Primary School is 36th out of the 52 primary schools in Denbighshire in terms of its school budget per pupil.*

#### Summary

The school's current performance	<b>Good</b>
The school's prospects for improvement	<b>Excellent</b>

Key Question	Judgement
How good are outcomes?	<b>Good</b>
How good is provision?	<b>Good</b>
How good are leadership and management?	<b>Good</b>

Current Performance	Prospects for improvement	Recommendations
---------------------	---------------------------	-----------------

<p>Current performance is good because of;</p> <ul style="list-style-type: none"> <li>• Nearly all pupils achieve good standards in many aspects of their work and many pupils who are more able achieve very well;</li> <li>• Teaching effectively engages and challenge pupils;</li> <li>• Pupils are well behaved, confident and eager to learn; and</li> <li>• The school provides good care and support for all pupils, including those with additional needs.</li> </ul>	<p>Prospects for improvement are excellent because;</p> <ul style="list-style-type: none"> <li>• The senior managers and governors have a very clear vision for the school, which is underpinned by exceptionally effective planning for improvement;</li> <li>• The headteacher provides very strong leadership and is well supported by an effective senior management team;</li> <li>• The school continually evaluates the impact of new initiatives through rigorous monitoring;</li> <li>• The clear focus on improvements is having a very positive impact on the standards that pupils achieve; and</li> <li>• The school has made very good progress since the last inspection.</li> </ul>	<p>In order to improve the school needs to;</p> <p><b>R1:</b> Improve the standard of boys' writing.</p> <p><b>R2:</b> Ensure that pupils use their knowledge of the Welsh language throughout the school day.</p> <p><b>R3:</b> Improve pupils' attendance.</p>
--------------------------------------------------------------------------------------------------------------------------------------------------------------------------------------------------------------------------------------------------------------------------------------------------------------------------------------------------------------------------------------------------------------------------------------------------------------------------------	-----------------------------------------------------------------------------------------------------------------------------------------------------------------------------------------------------------------------------------------------------------------------------------------------------------------------------------------------------------------------------------------------------------------------------------------------------------------------------------------------------------------------------------------------------------------------------------------------------------------------------------------------------------------------------------------------------	------------------------------------------------------------------------------------------------------------------------------------------------------------------------------------------------------------------------------------------------------------------

9.14 The most recent Estyn inspection for Ysgol Pen Barras took place in May 2011 , the Estyn report commented as follows;

#### Context

*The town of Ruthin and the local area. It is a fairly prosperous area and, on the whole, pupils come from fairly advantaged social backgrounds. Over 2% of pupils are entitled to free school meals and this is substantially lower than the average for the county and Wales as a whole.*

*Currently, there are 216 full time pupils aged between 4 and 11 years old on roll and there are 32 nursery age children who attend on a part time basis, either in the morning or in the afternoon. There are 18 pupils on the special educational needs register, including one pupil who has a statement of special educational need. About 84% of pupils are from homes where Welsh is spoken. Less than 1% of the pupils are from minority or mixed ethnic backgrounds.*

*The school runs its own nursery called "Clwb Ffrindiau Bach" on a daily basis. It also runs a breakfast club every morning and an after school club. The Foundation Phase and key stage 1 classes are located in the school's main building, with the Nursery and key stage 2 classes in demountable classrooms. The site is shared with another primary school, Ysgol Stryd y Rhos.*

*The school was last inspected in 2005. The acting head teacher has been in post since the autumn of 2010. A permanent head teacher has been appointed to start in September 2011. The individual school budget in 2010 – 2011 per pupil for Ysgol Pen Barras is £3323 which compares with a maximum of £18610 and the minimum of £2626 for primary schools in Denbighshire. This is the school with the 45th highest budget per pupil of the 53 primary schools in Denbighshire.*

#### Summary

School's current performance	<b>Good</b>
School's prospects for improvement	<b>Good</b>

<b>Key Question</b>	<b>Judgement</b>
How good are outcomes?	<b>Good</b>
How good is provision?	<b>Good</b>
How good are leadership and management?	<b>Good</b>

<b>Current Performance</b>	<b>Prospects for improvement</b>	<b>Recommendations</b>
<p>Current performance is good because of;</p> <ul style="list-style-type: none"> <li>• The pupils across the school achieve good standards;</li> <li>• The quality of teaching is good;</li> <li>• The pupils benefit from the interesting and varied learning experiences;</li> <li>• Pupils enjoy school, behave very well and are enthusiastic when learning;</li> <li>• There are good relationships between the school and the parents and the local community.</li> </ul>	<p>Prospects for improvement are good because;</p> <ul style="list-style-type: none"> <li>• The teachers and the support staff display substantial dedication to maintain and improving standards;</li> <li>• The self-evaluation procedures in which all the staff and the governors have participated over the past year have given rise to improvements, although there is room for further development;</li> <li>• The school co-operates with a good range of partners; and</li> <li>• The inspection team is of the view that the school will implement the recommendations of the report and ensure effective co-operation between professional staff, the Governing Body and the local authority (LA).</li> </ul>	<p>In order to improve the school needs to;</p> <p><b>R1:</b> Aim for excellent standards.</p> <p><b>R2:</b> Improve the planning for development and progression in ICT skills in key stage 2.</p> <p><b>R3:</b> Improve arrangements for assessment and tracking pupils' progress and give pupils a more active role in improving their own work.</p> <p><b>R4:</b> Continue to develop the school's leadership roles and further develop the role of the Governing Body.</p> <p><b>R5:</b> Further improve the self evaluation systems.</p> <p><b>R6:</b> Co-operate with the LA to improve the site's limitations.</p>

9.15 Both Estyn reports are available on the Estyn website<sup>vi</sup>.

9.16 The Welsh Government National Categorisation of Primary Schools as of January 2015 provides a banding system for all primary schools in Wales. In addition all primary schools are placed within a support category.

9.17 There are 4 support categories that use a 'traffic light' system, the definitions are as follows;

- ⇒ **Green Support Category:** A highly effective school which is well run, has strong leadership and is clear about its priorities for improvement.
- ⇒ **Yellow Support Category:** An effective school which is already doing well and knows the areas it needs to improve.
- ⇒ **Amber Support Category:** A school in need of improvement which needs help to identify the steps to improve or to make change happen more quickly.
- ⇒ **Red Support Category:** A school in need of greatest improvement and will receive immediate intensive support.

9.18 The table below displays the support categories and bands of Ysgol Rhewl, Rhos Street School and Ysgol Pen Barras (information relating to other identified provision can be found in Appendix 1);

School	Support Category	Band
Ysgol Rhewl	Amber	3 (Amber)
Rhos Street School	Green	1 (Green)
Ysgol Pen Barras	Yellow	2 (Yellow)

9.19 You can find out more information regarding the National Schools Categorisation System in the parents' guide published by the Welsh Government<sup>vii</sup>.

## 10. Additional Learning Needs

10.1 If the current proposal is progressed it will result in a change in the learning environment for all pupils. It is acknowledged by the authority that although the change will be experienced by all pupils it may prove more challenging for pupils with special educational needs. The Council will take all practicable steps to minimise disruption and assist pupils with any transfer.

10.2 Of the current pupil cohort 16.9% of pupils are registered ALN pupils at Ysgol Rhewl. The Denbighshire average is 20.5%. Any pupils with additional learning needs currently attending Ysgol Rhewl will continue to receive the same educational support that is required. Arrangements that are currently in place for pupils, such as dedicated 1-2-1 support, will be replicated in their new learning environment.

10.3 Denbighshire County Council will provide appropriate help and support for additional learning needs pupils. Should parents with pupils who are registered ALN have any questions regarding the support that the Council could offer they will have the opportunity to speak to the relevant ALN Education Officers.

10.4 The new facilities on the Glasdir site will be designed in consultation with Denbighshire's ALN Education Officers, and the staff and pupils concerned. It is anticipated that with this approach it will produce improved conditions and learning environments for pupils



with ALN specifically regarding dedicated 1-2-1 areas, resources, accessibility and acoustics.

## 11. Secondary Provision

11.1 The proposal is not expected to have any significant impact on secondary provision within the area. Ysgol Rhewl, and all proposed alternative and neighbouring schools also feed Ysgol Brynhyfryd, Ruthin. It is not expected that there will be any significant fluctuation in the pupils accessing the English, Welsh or Bilingual streams.

## 12. The Proposal in Detail: Description and Rationale

12.1 Denbighshire County Council has a responsibility to provide the best possible educational provision for children and young people. This proposal has been developed in line with;

- A. The Council's commitment to Modernising Education;
- B. The School Effectiveness Framework's aim of enabling all children and young people to develop their full potential.

12.2 There are a number of issues facing Ysgol Rhewl that could impact on the ability to sustain educational standards and experiences into the future.

### Educational Case for Change

12.3 In considering the proposal careful attention has been given to the likely impact of this proposal on the quality of outcomes, provision and leadership and management. In summary, Denbighshire County Council as the proposer, believe that the proposal would at least maintain provision for the following reasons:

- I. **Outcomes- standards and wellbeing-** the proposal is likely to at least maintain existing outcomes for the pupils of Ysgol Rhewl. It is anticipated that the named alternative schools, Rhos Street School and Ysgol Pen Barras, would ensure that pupils would receive a full, broad and balanced curriculum delivery at both the Foundation Phase and Key Stage 2. Pupils are taught in age appropriate classes at both Rhos Street School and Ysgol Pen Barras which would contribute positively to the development of pupils.
- II. **Provision- learning experiences, teaching, care support and guidance, learning environment-** The existing pupils of Ysgol Rhewl would experience a change in their learning environment. Their new learning environment would be a new, purpose built school tailored to meet the requirements of the modern curriculum and offering pupils access to a range of opportunities. Any support individual pupils receive will be replicated within their new learning environment. The new school will have additional teaching capacity to allow for smaller 'break out' areas for groups of pupils who require extra support and for more able and talented pupils.

- III. **Leadership and Management- leadership, improving quality, partnership working and resource management-** The proposal offers alternative provision at least equivalent to the leadership and management of Ysgol Rhewl. The proposal would lead to greater stability and efficiency in terms of resource management and lead to greater economies of scale. This will also provide scope for a greater number of curriculum leads amongst the teaching staff and a stronger senior management team than would likely be the case at Ysgol Rhewl. The new development will see Rhos Street School and Ysgol Pen Barras share a site (as is the status quo) which could provide the opportunity for partnership working between both schools. Pupils will have access to a wider compliment of teaching staff with expertise in a number of curricular and extra-curricular areas.

#### **Impact of the Proposal on Outcomes and Curriculum Delivery**

- 12.4 Should the existing pupils of Ysgol Rhewl transfer to either Rhos Street School or Ysgol Pen Barras the number of pupils transferring are unlikely to negatively impact on the abilities of either school to deliver the curriculum at both the Foundation Phase and Key Stage 2. Both schools currently have surplus places that are capable of absorbing the pupils from Ysgol Rhewl. This is also the case for all other schools identified by the authority with all having available pupil places.
- 12.5 Currently pupils in Ysgol Rhewl are taught in mixed age year groups encompassing up to 4 year groups. Should the current proposal be implemented and pupils transfer to either Rhos Street School or Ysgol Pen Barras they would be taught in age appropriate class structures. Class sizes at both alternative schools are below the recommended maximum pupil number of 30. The pupil teacher ratios for all 3 schools are included within section 9 of this document and suggest a marginal difference between all 3 schools.
- 12.6 Based on the most recent data regarding attainment and achievement at all 3 schools it is likely that the proposal will at least maintain the current standards of education. The most recent inspections demonstrate that all 3 schools are judged to be good in most areas and excellent in others. There are no significant shortcomings in either of the proposed alternative provisions.
- 12.7 The pupil forecasts for Ysgol Rhewl, Rhos Street School and Ysgol Pen Barras are included below to demonstrate that going forward the proposal would not negatively affect the abilities of the schools to absorb pupils from Ysgol Rhewl within their existing class structures;

School	2015	2016	2017	2018	2019
Ysgol Rhewl	50	46	42	41	39
Rhos Street School	143	139	134	122	113
Ysgol Pen Barras	221	216	224	218	218
Totals	414	401	400	381	370

12.8 The new capacity of Rhos Street School would be 180 full time pupils and Ysgol Pen Barras will have a full time capacity of 270. Overall the site can accommodate 450 full time pupils.

12.9 All other identified alternative schools in the area are forecasts to have available surplus places. More details on pupil forecasts for other alternative provision can be found in **Appendix 1**.

### **Impact of the Proposal on Provision**

12.10 It is the view of the authority that the current provision that pupils of Ysgol Rhewl receive would at least be maintained should the current proposal be implemented. As per the most recent Estyn inspections there are no shortcomings in the teaching, care support and guidance at either of the alternative schools.

12.11 Larger schools can offer wider provision in terms of the curriculum and extra-curricular facilities. In the 'School Size and Effectiveness- December 2013' Estyn thematic report it states;

*"Curriculum provision is better in large primary schools. In small schools, there tends to be shortcomings in the provision of foundation subjects at key stage 2. These shortcomings differ from school to school, but are often linked to gaps in the expertise of staff."*<sup>viii</sup>

12.12 Currently the learning environments at the alternative schools allow for the delivery of the curriculum at both Foundation Phase and Key Stage 2 however there are fundamental issues with the site that may impact on the ability to implement a full curriculum in the future.

12.13 However the alternative schools, Rhos Street School and Ysgol Pen Barras, will be relocated to new school buildings and facilities by September 2017. This will provide pupils with access to 21<sup>st</sup> century, fit for purpose learning environments tailored to meet the requirements of a fluid and innovative 21<sup>st</sup> Century Welsh curriculum. Should

the current proposal be implemented the pupils of Ysgol Rhewl would also have access to these new facilities.

12.14 The proposed alternative provision, Rhos Street School and Ysgol Pen Barras, offer wrap-around-care in the form of playgroups, breakfast clubs and after school facilities. The 2014 Denbighshire Childcare Sufficiency Assessment<sup>ix</sup> for Denbighshire found that there was sufficient childcare places available within the Ruthin area with a number of surplus of places. It is not likely that the proposal will have a negative impact on access to childcare as there are sufficient places available, inclusive of early years funded places.

### **Impact of the Proposal on Leadership and Management**

12.15 Leadership and management at Ysgol Rhewl were judged to be 'Good' at the last Estyn inspection. Leadership and management at Rhos Street School and Ysgol Pen Barras were also judged 'Good' at their respective inspections.

12.16 Smaller schools, due to financial constraints, find it difficult to implement senior leadership structures that meet the requirements of teacher pay and conditions. Due to the relatively small pupil numbers at Ysgol Rhewl the Headteacher and Senior Leadership team have substantial teaching commitments. This wider issue was noted within a recent Estyn thematic report 'School Size and Effectiveness' December 2013 which states;

*"Leadership and processes to improve quality are usually better developed in large primary schools. In small primary schools, many headteachers have a significant teaching responsibility that limits the time they can devote to leading and managing and they have fewer opportunities to evaluate standards and to drive improvement."*<sup>x</sup>.

12.17 It is the view of the authority that should pupils transfer to either Rhos Street School or Ysgol Pen Barras it would not have a negative impact on the current leadership and management structures at Ysgol Rhewl. It would likely be a positive impact for pupils to have access to a broader compliment of teaching staff offering expertise in a number of different curriculum areas.

## **13. Adequacy of Existing School Buildings and Facilities**

13.1 Whilst the existing facilities at Ysgol Rhewl allow for the delivery of the basic curriculum entitlement, the current environment restricts the potential to deliver the innovative

curriculum required for 21<sup>st</sup> Century Learning. The current gross area of the building meets the current standards required in Building Bulletin 99 for a school of its size (82 FT capacity).

13.2 The condition of Ysgol Rhewl school was rated as Category B (Satisfactory) in a survey carried out in December 2009 by EC Harris. This survey was carried out to provide data for the Welsh Government for the purposes of gathering data for the 21<sup>st</sup> Century Schools Programme. Surveys of school buildings are also carried out to provide data for the Welsh Government each year by Denbighshire County Council. A survey carried out in June 2014 found that both the Condition and Suitability were B- Satisfactory. The grades and what they indicate are set out below;

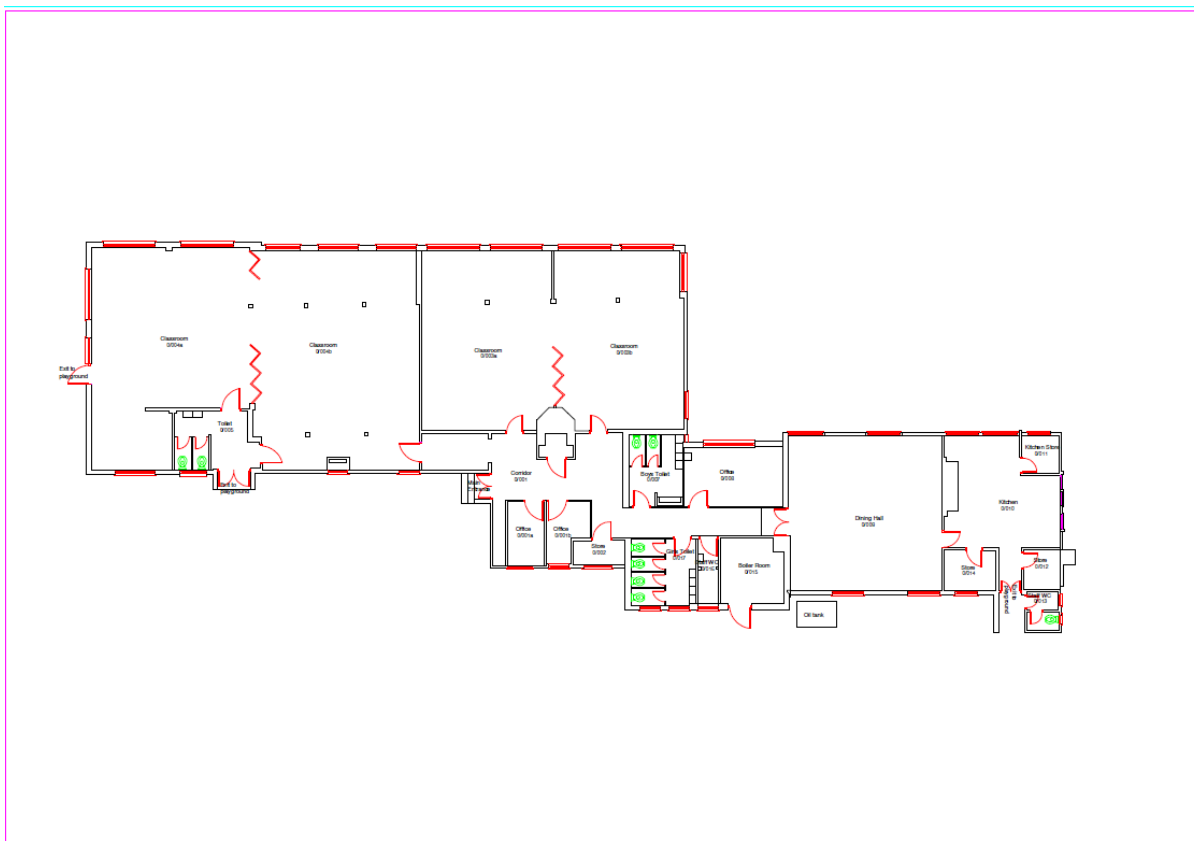
<b>Condition Category Rating</b>	<b>Meaning</b>
A (Good)	Performing as intended and operating efficiently
B (Satisfactory)	Performing as intended but exhibiting minor deterioration
C (Poor)	Exhibiting major defects and/or not operating as intended
D (Bad)	Life expired and/or serious risk of imminent failure

13.3 The existing school accommodation and facilities for Ysgol Rhewl are set out in the table below;

<b>Classrooms</b>	<b>Mobiles</b>	<b>Hall/Dining</b>	<b>Library</b>	<b>ICT Area</b>	<b>Outdoor Hardplay</b>	<b>Playing Field</b>
2*	X	✓	✓	✓	✓	X

13.4 The image below is the current floorplan of the school;

Ysgol Rhewl



Floor Plan

1:75 @ A1

13.5 In 2010 EC Harris undertook a condition survey on all schools in Wales as part of the Welsh Governments 21<sup>st</sup> Century Schools Programme. The condition categories for Rhos Street School and Ysgol Pen Barras provided as part of the Welsh Government 2009 survey are provided in the table below;

School	Overall Condition
Rhos Street School	B
Ysgol Pen Barras	C
Ysgol Rhewl	B

13.6 The condition and suitability categories as produced by Denbighshire in June 2014 for Rhos Street School and Ysgol Pen Barras are as follows;

School	Condition	Suitability
Ysgol Rhewl	B	B
Rhos Street School	A	B
Ysgol Pen Barras	B	C

13.7 The current maintenance backlog for Ysgol Rhewl, Rhos Street School and Ysgol Pen Barras is provided below;

School	Maintenance Backlog
Ysgol Rhewl	£127,182
Rhos Street School & Ysgol Pen Barras (Shared Site)	£567,902
Total	£695,084

13.8 As part of the initial stages of the Ruthin area review feasibility works were undertaken on each school within the Ruthin area. The feasibility work findings are summarised as follows for Ysgol Rhewl;

- School is insubstantial and temporary in nature but work has been undertaken internally and externally to create a stimulating environment for the pupils.
- The internal layout is reasonably laid out with adequate classroom and circulation areas, although consideration could be given to sound deadening in classroom areas to provide a better teaching environment.
- PE provision on site is limited with some use of the dining area but use is made of the pavilion on the community playing field. There is no dedicated playing field but the community field is available for use by the school.
- There is no on-site parking or dedicated drop off/pick areas however some parking provision is to be provided for the school within a nearby housing development.
- There are some issues around access with no level access to the main entrance and there is no access to a disabled WC.

13.9 During the detailed feasibility work undertaken in the Autumn of 2014, officers from the Council met with representatives of the school during a school site visit. Options for the school have assessed refurbishment work, extension to the building and a new school build to tackle some of the issues concerning the adequacy of the school building and site. However the site did not meet the required BB99 size recommendations for a standard 105 school. Further extension to the building would also impact on the available outdoor space.

13.10 Refurbishment works to bring the school site up to a 21<sup>st</sup> century schools standard has been costed at £541,696.

### Impact of the Proposal on Adequacy of School Buildings and Facilities

13.11 £8.9million in capital funding has been allocated by Denbighshire County Council to invest in new school buildings and facilities for both Rhos Street School and Ysgol Pen Barras.

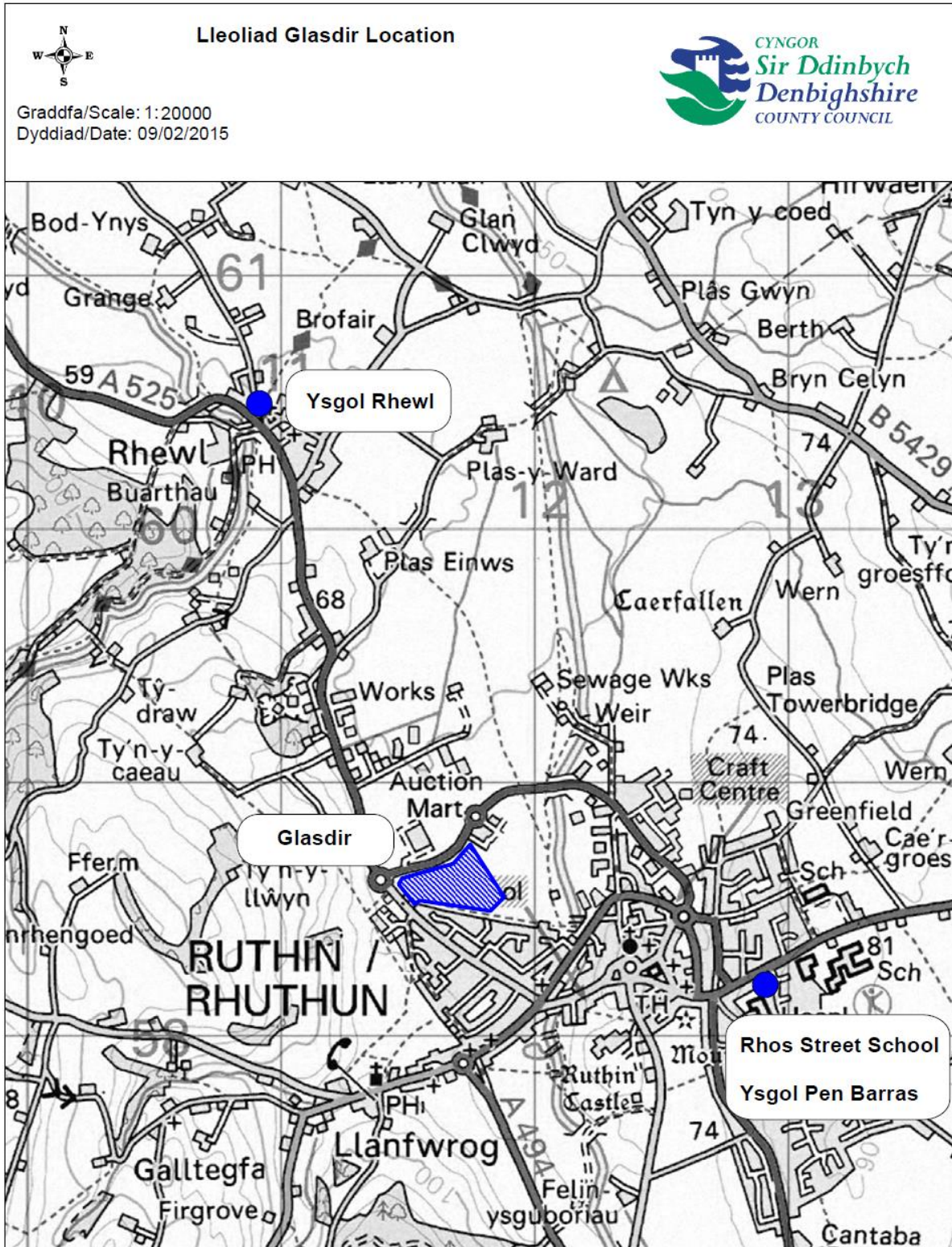
13.12 The schools currently share a site within the town of Ruthin, it is proposed that both schools will move to the new development on Glasdir with some areas being shared (such as the grass pitch, multi-use games area, car park and dedicated pick up and drop off facilities). The brief for the school design will be based on current Building Bulletin 99 requirements which specify recommended areas for schools in terms of teaching and non-teaching areas. The new facilities would meet a 21<sup>st</sup> century schools standard. On completion of the Glasdir development both school buildings would be expected to be graded 'A' for both condition and suitability.

13.13 The proposed new facilities would likely include;

- ⇒ *Basic teaching- nursery/reception, foundation phase and key stage 2 areas;*
- ⇒ *Specialist practical areas;*
- ⇒ *Hall spaces;*
- ⇒ *Learning resource centre;*
- ⇒ *Small group rooms;*
- ⇒ *Staff and administration;*
- ⇒ *Headteachers office and meeting room;*
- ⇒ *Staff room;*
- ⇒ *General office;*
- ⇒ *Sick bay;*
- ⇒ *SENCO/Multi-agency room;*
- ⇒ *Storage;*
- ⇒ *Kitchen and server area;*
- ⇒ *Toilets including accessible WC;*
- ⇒ *Hard and soft play areas.*

13.14 The new facilities will be located on the Glasdir site, approximately 1.1miles from Ysgol Rhewl. A map is provided below displaying the location of Ysgol Rhewl and the Glasdir site;





#### **14. What is the Proposed Option?**

- 14.1 The proposed option is to close Ysgol Rhewl as of 31<sup>st</sup> August 2017 with existing pupils transferring to either Ysgol Pen Barras or Rhos Street School to coincide with the opening of new facilities.
- 14.2 The new facilities will be ready for occupation from the 1<sup>st</sup> of September 2017, enabling the relocation of both Ysgol Pen Barras and Rhos Street School to the Glasdir site.
- 14.3 Denbighshire's Cabinet have recommended to Council to approve an investment of £8.9 million for new school buildings and facilities for both schools. Denbighshire's Council will consider approval of the investment in February 2014. This investment will provide both schools with buildings and facilities that meet a 21<sup>st</sup> century school standard.
- 14.4 The design process for the new school will commence during 2015. In terms of the overall design brief the Council will base plans for a new school on the current building standards for new schools.
- 14.5 The design for the new school will be progressed in partnership with both Ysgol Penbarras and Rhos Street and representatives of Ysgol Rhewl will be encouraged to participate in this process. The indicative time line suggests that the design process would take place until November 2015 with the construction of the new school commencing in March 2016. Completion is forecast for the summer of 2017 which would enable pupils attending currently attending Ysgol Rhewl to transfer to the new facilities in September 2017, subject to parental preference.

#### **15. Alternative Options**

- 15.1 Denbighshire County Council has given careful consideration to a range of alternative options as part of the development of the current proposal. In considering these options reference has been made to the main investment objectives of the Council's 21<sup>st</sup> Century Schools Programme which are as follows;

- a. Learning environments for children and young people aged from 3 to 19 that will enable successful implementation of strategies for school improvement and better educational outcomes;*
- b. Greater economy through better use of resources to improve efficiency and cost-effectiveness of the education estate and public provision; and*
- c. A sustainable education system with all schools meeting a 21<sup>st</sup> Century Schools Standard, and reducing recurrent costs and carbon footprint.*

- 15.2 The main options that have been considered are as follows;

Option 1: Maintain the Status Quo

Option 2: Do Minimum- Undertake Remedial Repairs

Option 3: Do Intermediate- Undertake Refurbishment and Extension

Option 4: Do Maximum- Provide New Build

Option 5: Closure

15.3 The main advantages and disadvantages of each option, including the current proposal, are outlined below;

<b>Option 1: Maintain the Status Quo</b>	
<b>Advantages</b>	<b>Disadvantages</b>
<ul style="list-style-type: none"> <li>▪ No capital spend required</li> </ul>	<ul style="list-style-type: none"> <li>▪ Would not provide 21<sup>st</sup> Century school facilities or lead to any improvement in the learning environment</li> <li>▪ Shortfalls and deficiencies would remain and likely worsen in the short to medium term, in turn impacting negatively on the ability to deliver the curriculum.</li> <li>▪ It would not lead to a reduction in surplus places.</li> <li>▪ It would not lead to a greater efficiency and effectiveness of the school estate.</li> </ul>

<b>Option 2: Undertake Remedial Repairs</b>	
<b>Advantages</b>	<b>Disadvantages</b>
<ul style="list-style-type: none"> <li>▪ Minimal capital spend required.</li> </ul>	<ul style="list-style-type: none"> <li>▪ This would lead to some improvement in the learning environment but would not meet 21<sup>st</sup> century schools standards. This would be a fire-fighting exercise to repair current issues.</li> <li>▪ It would not lead to a reduction in surplus places.</li> <li>▪ It would not lead to a greater efficiency and effectiveness of the school estate.</li> </ul>

<b>Option 3: Do Intermediate- Undertake Refurbishment and Extension</b>
-------------------------------------------------------------------------

Advantages	Disadvantages
<ul style="list-style-type: none"> <li>▪ Would result in some improvement in the learning environments and address the current deficiencies and issues.</li> </ul>	<ul style="list-style-type: none"> <li>▪ Size of the site itself is relatively constrained, an extension would take away some external areas.</li> <li>▪ Would require a significant capital investment of £1,005,996.</li> <li>▪ This option would not lead to a reduction in surplus places and due to the extension works may lead to an increase in surplus places.</li> <li>▪ This option would not lead to greater efficiency and effectiveness of the school estate.</li> </ul>

<b>Option 4: Do Maximum- Provide New Build</b>	
Advantages	Disadvantages
<ul style="list-style-type: none"> <li>▪ Would provide 21<sup>st</sup> century school facilities.</li> </ul>	<ul style="list-style-type: none"> <li>▪ Would require significant capital investment.</li> <li>▪ Issues around the size of the current site, the site could not accommodate a standard 105 model build under BB99 regulations.</li> <li>▪ Alternative sites could require land purchase within the village, further increasing capital outlay.</li> <li>▪ It would not reduce surplus places and would likely lead to an increase in surplus places.</li> </ul>

<b>Option 5: Closure</b>	
Advantages	Disadvantages
<ul style="list-style-type: none"> <li>▪ Existing pupils would have access to 21<sup>st</sup> century school buildings and facilities.</li> <li>▪ It would reduce surplus places.</li> <li>▪ A net saving of £150k would be made which could be reinvested back into Denbighshire's Modernising Education Programme.</li> <li>▪ Any future disposal of the site may result in a capital receipt which could also be reinvested back into Denbighshire's Modernising Education Programme.</li> </ul>	<ul style="list-style-type: none"> <li>▪ Educational provision within the village of Rhewl would cease.</li> <li>▪ Community use of the school would also cease however alternative provision is available in the community pavilion.</li> <li>▪ Staff at the school would be redeployed, or possible face redundancy however DCC HR team would work with staff on an individual basis.</li> </ul>

15.4 The table below provides an analysis of the above options in relation to the investment objectives and critical success factors;

	Option 1 Status Quo	Option 2 Do Minimum	Option 3 Do Intermediate	Option 4 Do Maximum	Option 5 Closure
1 Improved Learning Environment	x	x	✓	✓	✓
2 Greater Economy – Revenue Implications	x	x	x	x	✓
2 Greater Economy – Capital	x	x	x	x	✓
3 Sustainable Education system	x	x	x	x	✓
CSF1 Improved attainment and performance	x	x	✓	✓	✓
CSF2 Improved school condition and suitability	x	x	✓	✓	✓
CSF3 Reduction in surplus places	x	x	x	x	✓
CSF4 Greater Efficiency and Effectiveness	x	x	x	x	✓
Summary	Discounted	Discounted	Possible	Discounted	Preferred

## 16. Admissions Arrangements

16.1 School admissions will be dealt with in line with Denbighshire County Council's School Admissions policy<sup>xi</sup>. Should this proposal progress, Denbighshire's admissions team will liaise with parents during the academic year 2016-2017 to ensure a stable transition for pupils who are transferring to an alternative provision. Should the current proposal be implemented the admissions service would write to all parents to outline the options available.

## 17. Transport Implications

17.1 For the current academic year the transport costs for Ysgol Rhewl is £121 per day. Over a school year (191 days) this equates to £23,111.

17.2 Currently 12 pupils, or 22.6% of the 53 full time pupils utilise free home to school transport. The table below demonstrates the catchment locations for Ysgol Rhewl;

Location	No.
Rhewl	20
Ruthin (town)	14
Cyffylliog	9
Denbigh	3
Pentrecelyn	2
Pwllglas	2
Bryn Saith Marchog	2

17.3 It is expected that the proposal will have a neutral impact on current transport costs, with many existing pupils travelling to Ysgol Rhewl living closer to the Glasdir site than Ysgol Rhewl as is demonstrated in the table above.

17.4 There is an existing off-road cycle path from the village of Rhewl to the new Glasdir site, which is approximately 1.1miles. There is also a non-hazardous walking route from the village to the Glasdir site. Additional highway recommendations, such as appropriate signalling and school crossing patrols, will also be explored during the design stages of the new Glasdir development.

17.5 Transport to either Rhos Street School or Ysgol Pen Barras would be provided in accordance with Denbighshire County Council's Transport Policy<sup>xii</sup> which states that free transport is provided for pupils who live more than 2 miles from their nearest suitable school or part of the route is deemed hazardous.

## 18. Staffing Implications

18.1 Should the current proposal be implement the authority would work with the current member of staff at Ysgol Rhewl, including teaching and ancillary staff, should they seek redeployment opportunities.

18.2 As part of the formal consultation process there will be a full consultation with staff and the appropriate teaching unions. A staff meeting will be held during the period of consultation and a representative from Denbighshire County Council's HR service will be present to provide advice to staff.

18.3 It is not expected that there will be any significant impact on the staff at the schools named within the proposal for reasons set out in the educational case for change section of this document.

## 19. What are the Financial Implications?

19.1 The cost of provision based upon the 2014/2015 budget share is £5,977 per pupil in Ysgol Rhewl. The DCC average is £3,931.

19.2 The current staffing cost for Ysgol Rhewl is £267,364 (current academic year).

19.3 The current and forecasted 3 year financial position of the school is as follows;

School	Actual Balance 2014	Predicted Balance 2015	Predicated Balance 2016	Predicted Balance 2017
Ysgol Rhewl	19,603	6,870	(13,345)	(66,686)

*\*based on 3 year existing plan*

19.4 For the 2014/2015 academic year Ysgol Rhewl's budget is £311k. Based on current budget position it is estimated that there would be a non-pupil led saving of £150k if the current proposal was implemented. This would be deducted from the school budget quantum. An estimated £161k is pupil led funding and therefore would remain on the schools budget quantum to follow the pupils to a school that they transfer to.

19.5 The non-pupil led saving (£150k) would be re-invested within the Councils corporate plan to deliver its priorities including investment in school buildings.

19.6 Should the school proposal be implemented the school site would be declared surplus and would be disposed of in accordance with the current policy on the disposal of school sites. The capital receipt would be reinvested within the Council's corporate plan to deliver its priorities including investment in school buildings.

19.7 The current and forecasted 3 year financial position of Rhos Street School and Ysgol Pen Barras is as follows;

School	Actual Balance 2014	Predicted Balance 2015	Predicated Balance 2016	Predicted Balance 2017
Rhos Street	80,643	56,950	(7,572)	(65,873)
Pen Barras	76,810	67,613	51,251	(9,296)

19.8 The overall budget for Rhos Street School for the 2014/2015 academic year is £592,745 and for Ysgol Pen Barras £834,592. The current staffing costs for Rhos Street School is £523,810 and Ysgol Pen Barras is £737,848.

19.9 Should the proposal be implemented the capital funding (£8.9million) for the new school buildings and facilities would be funded by Denbighshire County Council. This will be made of a mixture between prudential borrowing, cash reserves and capital receipts. At this stage of the project there is no dependence on external funding.

## 20. What are the Disadvantages and Risks of the Proposal?

- 20.1 If the current proposal proceeds, primary educational provision will cease in the village of Rhewl.
- 20.2 Upon closure of the school it is expected that some children would be required to travel further to school, dependent on parental preference for alternative provision. Due to the close proximity (approx. 1.1m) of the new facilities on Glasdir, this would become a closer option for some of the existing pupils currently attending Ysgol Rhewl. Transport would only be provided in line with Denbighshire's transport policy and some pupils may not be eligible.
- 20.3 The implementation of the current proposal for Ysgol Rhewl will be progressed in tandem with the proposed investment of the Glasdir development for Ysgol Pen Barras and Rhos Street School. Should there be any significant delays in the progression of this Glasdir development the implementation of the current proposal for Ysgol Rhewl will be modified as appropriate. All risks associated with the proposal will be monitored within the overall programme risk register and within any individual project register.

## **21. Community and Welsh Language Impact Assessment**

- 21.1 As the current proposal, if implemented, will result in the closure of the school a equality, Welsh language and community impact assessment has been carried out and this is available in full on our website under current consultation section<sup>xiii</sup>.

### **Summary of Welsh Language Impact Assessment**

- 21.2 It should be noted that attempting to gauge the potential impact from school organisation on the Welsh language is a difficult undertaking.
- 21.3 The main positives emerging from the impact assessment is the impact on the educational provision and access to Welsh medium education within a close proximity. The proposal represents an opportunity to improve and to strengthen education in the area.
- 21.4 Overall, the Current Proposal will be neutral in terms of its impact on the Welsh language. Even though the Current Proposal would reduce the amount of dual stream offer it provides access and maintains parental preference for language medium. Pupils who have chosen to access Welsh medium education will be thoroughly bilingual in the use of both Welsh and English on leaving primary school and have an appreciation of the cultural heritage of Wales. Pupils who opt for English medium, and Welsh taught as a second language (as is the current status quo for all pupils in Ysgol Rhewl) their current offer will be maintained.

There is an expectation that schools will increase and strengthen the bilingual nature of their school over time and will work towards moving along the path of a linguistic continuum so that more pupils have the opportunity to be fully bi-lingual.



Overall the proposal would not have a negative impact on the Welsh Language, with a high percentage of Welsh speakers in the community and a high percentage of those having one or more skills in Welsh. This is reflected in the numbers of pupils in the natural catchment area for Ysgol Rhewl attending nearby Welsh Medium schools.

### **Summary of Community Impact Assessment**

- 21.5 It should be noted that attempting to gauge the potential impact from school organisation on families and the local community is a difficult undertaking. The main positive emerging from the impact assessment is the impact on pupils through improved education provision.
- 21.6 The impact assessment has identified a number of possible areas where the proposal could impact negatively on local families and on the local community. Losing a school from the community is going to sever links between the school and the local community. Pupils are expected to transfer to Rhos Street School or Ysgol Pen Barras in Ruthin. There are measures that could be adopted to lessen the impact through fostering close links between the community and both schools, however developing these links will take time and the initial impact will be negative.
- 21.7 The loss of the school would impact on the community activities taking place and the community facilities within Ysgol Rhewl. There is scope for a number of activities currently taking place on the school site to relocate to the community pavilion and the Council has a policy regarding the retention of any surplus school site within the community which could reduce the negative impact and potentially result in a positive for the community.
- 21.8 The proposal would impact positively on parents and children through an improved educational provision for the children. However the proposal has the potential to impact negatively on parents from Rhewl and the wider community.
- 21.9 It should be noted that the potential negative impacts resulting from this proposal could be reduced by the local authority by the adoption of a number of possible measures to ensure that the community in Rhewl continues to thrive.
- 21.10 The existence of a separate pavilion facilities that already host a number of activities and could host activities that currently take place at the school provides a focal point for the community that would continue after the school has been closed. The potential increase in activity at the pavilion following the closure of the school could improve the long term viability of this community facility.
- 21.11 The local authority is committed to working with local communities and has an external funding advisory service to assist local communities in accessing funding for community projects.
- 21.12 The Council are aware of plans for housing in the village it is not consider that the numbers of primary pupil generated by the development would lead to any substantial increase in the pupil roll.

- 21.13 During the Formal Consultation, discussions will be held with the headteacher of the school to ensure that a greater understanding is obtained of the community activities held at the schools.
- 21.14 During the design stages for the new facilities consultation will take place with the wider school community of Ysgol Rhewl.
- 21.15 30 dwellings have been allocated within Rhewl as part of the Local Development Plan, and an additional 4 dwellings have also been allocated for the wider Llanynys area. Based on the formula used to estimate the number of primary pupils generated by housing developments ( $0.24 \times \text{No. of dwellings}$ ) it would be expected that the 34 houses would generate an additional 8 pupils. Based on the current trend of pupils within the area it would be reasonable to assume not all pupils would attend Ysgol Rhewl due to parental preference for differing provisions.

## **22. Explanation of Statutory Process**

- 22.1 In order for the Current Proposal to be implemented, Denbighshire County Council is required to follow a procedure laid out by a combination of an Act of the Welsh Government and a statutory Code.
- 22.2 The requirements are as follows:
- a. Consultation held with people likely to be affected by the Proposal;
  - b. Consultation report setting out details of the Consultation to be published on the council's website;
  - c. Publication of the Current Proposal (also known as the 'statutory notice') with details such as the planned implementation date, how to obtain a copy of the consultation report and how to object:
    - i) on the council's website;
    - ii) posted on or near the main entrance of the two schools; and
    - ii) by providing affected schools with copies to distribute to parents.
  - d. An objection period of 28 days from the date of publication allowing anyone who wishes to object to the Current Proposal to do so;
  - e. Determination by the council (when, subject to the above process, the decision to implement the Current Proposal may be approved);
  - f. Publication by the council of any objections and its response to them (within 7 days of the date of determination of the Current Proposal).
- 22.3 Please note that any response provided to the formal consultation will not be regarded as an objection to the Current Proposal. This is because the Current Proposal may change in response to the formal consultation. If you would like to object to the

Current Proposal, please wait until it has been published (as described in **paragraph 22.2(c)** above) then follow the procedure set out on the statutory notice.

## 22. Consultation Response Form

- 22.1 A response form for comments, including an opportunity for consultees to register their wish to be notified of publication of the formal consultation report, appears at the end of this consultation document.
- 22.2 You are welcomed to ask questions and let us have your views on the current proposal at the events outlined in the covering letter or to put your views in writing. Responses should be sent to Modernising Education Programme Team, Denbighshire County Council, County Hall, Wynnstay Road, Ruthin, LL15 1YN or by email to [modernisingeducation@denbighshire.gov.uk](mailto:modernisingeducation@denbighshire.gov.uk) by no later than 23<sup>rd</sup> of March 2015.

---

<sup>i</sup> School Standards and Organisation (Wales) Act 2013-

<http://wales.gov.uk/legislation/programme/assemblybills/schoolstandards/?lang=en>

<sup>ii</sup> The School Organisation Code (Wales)-

<http://wales.gov.uk/topics/educationandskills/publications/guidance/school-organisation-code/?lang=en>

<sup>iii</sup> Modernising Education Framework - available to read on request at DCC's offices in Ruthin or by visiting the website in the School Organisation & Modernising section- <https://www.denbighshire.gov.uk/en/your-council/strategies-plans-and-policies/education-and-schools/reviewing-our-schools.aspx>

<sup>iv</sup> MyLocalSchool Website, <http://mylocalschool.wales.gov.uk/>

<sup>v</sup> Defining Schools According to Welsh Medium Provision-

<http://wales.gov.uk/topics/educationandskills/publications/guidance/definingschools?lang=en>

<sup>vi</sup> Estyn website, [www.estyn.gov.uk](http://www.estyn.gov.uk)

<sup>vii</sup> National Schools Categorisation System Parents

Guide <http://wales.gov.uk/topics/educationandskills/schoolshome/raisingstandards/schoolbanding/?lang=en>

<sup>viii</sup> School Size and Effectiveness- December 2013,

<http://www.estyn.gov.uk/english/docViewer/295686.3/school-size-and-educational-effectiveness-december-2013/?navmap=30,163>,

<sup>ix</sup> Denbighshire Childcare Sufficiency 2014, <https://www.denbighshire.gov.uk/en/your-council/strategies-plans-and-policies/childcare-sufficiency-assessment.aspx>

<sup>x</sup> School Size and Effectiveness- December 2013,

<http://www.estyn.gov.uk/english/docViewer/295686.3/school-size-and-educational-effectiveness-december-2013/?navmap=30,163>,

<sup>xi</sup> Denbighshire School Admissions- <https://www.denbighshire.gov.uk/en/resident/education/school-admissions.aspx>

<sup>xii</sup> Denbighshire Free Home to School Transport Policy-

<https://www.denbighshire.gov.uk/en/resident/education/grants-and-funding/free-school-transport.aspx>

<sup>xiii</sup> Current Consultations- <https://www.denbighshire.gov.uk/en/your-council/consultations/current-consultations.aspx>

## Formal Consultation Response Form

Denbighshire County Council has proposed to close Ysgol Rhewl as of the 31<sup>st</sup> of September 2017 with existing pupils transferring to Ysgol Pen Barras or Rhos Street School to coincide with the opening of the new school buildings.

We would like to hear your views regarding the proposal. You can let your views be known in the following ways;

- If you are accessing this form online then please click **here** to complete the online survey;
- If you have received a hard copy of the response form please return your copy to **Modernising Education Programme Team, Denbighshire County Council, County Hall, Wynnstay Road, Ruthin, LL15 1YN**;
- Visit our website at [www.denbighshire.gov.uk/modernisingeducation](http://www.denbighshire.gov.uk/modernisingeducation) and follow the survey link;
- Alternatively you can scan the attached form and email it to us at [modernisingeducation@denbighshire.gov.uk](mailto:modernisingeducation@denbighshire.gov.uk)
- If you do not have access to a scanner, simply send an email to the address provided above with your responses, using the same numbering as set out below;

Please let us have your responses by **Monday 23rd March 2015**. If you would like us to acknowledge receipt of your response please provide your names and address.

### 1. Are you in favour of the proposal?

(Please tick one box)

Yes	
No	

### 2. Please indicate whether you are responding as a:

Pupil	Parent	Staff Member	Community Member	Other

If other, please indicate;

### 3. With which school are you most closely linked?

(Please tick only one box)

Ysgol Rhewl	
Rhos Street School	
Ysgol Pen Barras	

4. Please indicate if any of the following have had an influence on your decision;

Impact on Education	
Impact on local community	

If other, please state:-

(Please use an additional sheet if necessary)

5. If the proposal is implemented would you send your child/ children to Ysgol Pen Barras or Rhos Street School or would you choose an alternative provision?

Ysgol Pen Barras	
Rhos Street School	

If other, please state:-

(Please use an additional sheet if necessary)

---

**6. Please let us have any comments or views, positive or negative, that you have regarding the proposal:**

--

**(Please use an additional sheet if necessary)**

**7. Would you like us to acknowledge receipt of your response?**

<b>Yes</b>	
<b>No</b>	

---

**8. Would you like to receive an email link to the formal consultation report when it is published on the DCC website?**

Yes	
No	

**9. If you have answered yes to either of the two above questions please provide an email address below:**

--

**10. Under the terms of the Data Protection Act 1998 we must inform you of the following:**

Denbighshire County Council (DCC) are seeking your views to help inform the decision on the current proposal. The information you have provided will be used only for this purpose, and may be shared with other internal agencies who are involved with the Consultation, however only to inform decision makers of your views and to address any issues you raise. If you do not wish to provide personal details your views will still be considered, but we will not be able to acknowledge receipt of your response personally.

Denbighshire County Council is the data controller for the purpose of the Data Protection Act 1998. Your personal information will be processed in accordance with that Act and is being collected for the purpose stated above only, and will not be shared with any other party. Should you have any queries regarding this please contact us via email at [modernisingeducation@denbighshire.gov.uk](mailto:modernisingeducation@denbighshire.gov.uk).

**Thank you for taking the time to respond.**



# Appendix 1

**Additional Information: Proposal to Close Ysgol Rhewl**



## 1. Introduction

- 1.1. This section provides information relating to the main alternative educational provision that is available within the Ruthin area and information regarding other schools in the wider area that could be impacted should the proposal be implemented.
- 1.2. Information relating to Ysgol Rhewl, although contained within the consultation document, is included within tables for comparative purposes.
- 1.3. Should the current proposal progress, Denbighshire are recommending the nearest suitable schools would be either Rhos Street School or Ysgol Pen Barras. The Council recognise that parents may also choose other provision within the area.
- 1.4. The schools that may be impacted should the proposal progress are as follows;

School	Type	Language Categorisation	Admission Number*
Ysgol Rhewl	Community	Dual Stream- Category 2	11
Rhos Street School	Community	English, Category 5	27
Ysgol Pen Barras	Community	Welsh, Category 1	40
Ysgol Borthyn	Voluntary Controlled, CiW	English, Category 5	20
Ysgol Carreg Emlyn	Community	Welsh, Category 1	11
Ysgol Gellifor	Community	English, Category 5	13
Ysgol Llanbedr	Voluntary Controlled, CiW	English, Category 5	11
Ysgol Llanfair DC	Voluntary Controlled, CiW	Dual Stream- Category 2	16
Ysgol Bro Cinmeirch	Community	Welsh, Category 5	11

\*For the current academic year 2014/2015

## 2. Statistical Overview: Pupil Numbers

- 2.1. The table below provides information on current pupil numbers as of September 2014, the current capacity and current numbers of surplus places;

School	Current Pupil No. FT	Current Pupil No. PT	Current FT Capacity	Current PT Capacity	No. of Surplus Places	% of Surplus Places
Rhewl	53	3	82	11	29	35.4%
Rhos Street	151	14	189	23	38	20.1%
Pen Barras	223	36	252	36	29	11.5%
Borthyn	120	22	142	20	22	15.5%
Carreg Emlyn*	60	14	80	11	20	25%
Gellifor	87	7	91	10	4	4.4%
Llanbedr	22	11	54	11	32	59.2%
Llanfair DC	92	14	113	14	21	18.6%
Bro Cinmierch	69	17	80	11	11	13.7%
<b>Totals</b>	<b>877</b>	<b>138</b>	<b>1083</b>	<b>147</b>	<b>206</b>	<b>19.1%</b>

\*Carreg Emlyn is a newly established area school serving the communities of Clocaenog and Cyffylliog. The new area school replaces Ysgol Clocaenog and Ysgol Cyffylliog.

2.2. The table below provides a breakdown of pupils across all year groups (inclusive of Ysgol Rhewl), this provides an overview of class sizes at each of the alternative schools;

Full Time Pupil Numbers Sept 2014 PLASC								
School	Reception	Year 1	Year 2	Year 3	Year 4	Year 5	Year 6	Total
Rhewl	5	6	9	8	5	9	11	53
Rhos Street	12	18	29	24	27	19	22	151
Pen Barras	37	25	32	31	38	23	37	223
Borthyn	22	17	11	14	14	18	24	120
Carreg Emlyn	10	9	12	7	10	7	5	60
Gellifor	12	11	12	16	9	12	15	87
Llanbedr	7	3	6	2	3	0	1	22
Llanfair DC	15	13	11	13	12	13	15	92
Bro Cinmeirch	8	12	11	10	10	10	8	69
<b>Total</b>								<b>877</b>
<b>Overall Capacity</b>								<b>1083</b>
<b>Total Surplus</b>								<b>206</b>

2.3. That table below displays the information regarding past pupils numbers, Full Time (FT) and Part Time (PT);

Past Pupil Numbers 2010-2014- January PLASC										
School	2010		2011		2012		2013		2014	
	FT	PT	FT	PT	FT	PT	FT	PT	FT	PT
Rhewl	34	6	34	4	37	8	55	5	50	4
Rhos Street	177	25	179	19	167	25	163	14	161	10
Pen Barras	215	38	216	32	218	36	223	27	223	36
Borthyn	104	11	103	14	113	9	111	18	114	23
Carreg Emlyn*	47	13	53	12	59	14	55	13	58	14
Gellifor	73	5	77	10	85	12	87	11	86	11
Llanbedr	63	8	59	10	37	6	21	4	21	7
Llanfair DC	94	11	96	13	93	10	90	14	84	13
Bro Cinmeirch	51	11	56	12	57	17	62	16	60	14

\*Carreg Emlyn is a new area school replacing the former Ysgol Clocaenog and former Ysgol Cyffylliog. Combined pupil numbers for these schools have been used.

2.4. The most recent pupil projections were undertaken in July 2014 and sent to all Denbighshire schools. The table below displays the pupil projections for the coming 5 year period;

Pupil Projections 2015-2019					
School	2015	2016	2017	2018	2019
Rhewl	50	46	42	41	39
Rhos Street	143	139	134	122	113
Pen Barras	221	216	224	218	218
Borthyn	117	111	114	121	125
Carreg Emlyn	70	74	79	81	85
Gellifor	92	86	84	87	83
Llanbedr	28	30	35	36	37
Bro Cinmeirch	72	76	82	85	88
Llanfair DC	82	80	83	87	87
<b>Totals</b>	<b>875</b>	<b>858</b>	<b>877</b>	<b>878</b>	<b>875</b>

### 3. Educational Outcomes and Attainment

3.1. The table below displays the outcomes at the end of Key Stage 2 at each of the schools;

<b>% achieving Level 4+ at Key Stage 2</b>					
<b>School</b>	<b>2010</b>	<b>2011</b>	<b>2012</b>	<b>2013</b>	<b>2014</b>
Rhewl	100%	100%	100%	100%	75%
Rhos Street	93.5%	93.3%	96.6%	92.6%	100%
Pen Barras	97.1%	90%	96.8%	94.3%	89.7%
Borthyn	58.8%	78.6%	92.3%	93.3%	80%
Carreg Emlyn was Clocaenog Cyffylliog	100% 50%	100% 100%	100% 100%	75% n/a	100% n/a
Gellifor	92.9%	92.3%	100%	91.7%	100%
Llanbedr	84.6%	100%	85.7%	100%	N/A
Bro Cinmeirch	100%	80%	100%	91.7%	100%
Llanfair DC	88.9%	91.7%	100%	94.1%	93.3%
<b>Denbighshire</b>	<b>78.1%</b>	<b>82.3%</b>	<b>83.5%</b>	<b>86%</b>	<b>86.6%</b>
<b>Wales</b>	<b>77%</b>	<b>80%</b>	<b>82.6%</b>	<b>84.3%</b>	<b>86.1%</b>

3.2. The table below displays the outcomes at the end of the Foundation Phase at each of the schools;

<b>% of pupils achieving outcome 5 and above at Foundation Phase</b>					
<b>School</b>	<b>2010 CSI</b>	<b>2011 CSI</b>	<b>2012 FPOI</b>	<b>2013 FPOI</b>	<b>2014 FPOI</b>
Rhewl	100%	100%	66.7%	83.3%	85.7%
Rhos Street	88.9%	90%	95.2%	100%	100%
Pen Barras	100%	97.1%	95.5%	94.7%	93.5%
Borthyn	82.4%	77.3%	58.8%	53.8%	100%
Carreg Emlyn* was Clocaenog Cyffylliog	100% 100%	80% 100%	71.4% n/a	83.3% 60%	100% 100%
Gellifor	100%	94.7%	100%	100%	93.3%
Llanbedr	85.7%	87.5%	100%	83.3%	100%
Bro Cinmeirch	100%	90%	75%	90.9%	80%
Llanfair DC	94.1%	86.7%	100%	100%	92.3%
<b>Denbighshire</b>	<b>82.4%</b>	<b>79.8%</b>	<b>86.4%</b>	<b>84.9%</b>	<b>86.1%</b>
<b>Wales</b>	<b>81.6%</b>	<b>82.7%</b>	<b>80.5%</b>	<b>83%</b>	<b>85.2%</b>

3.3 The Free School Meals 3 year average for the schools are displayed in the table below;

School Name	FSM- 3 year average 2014
Ysgol Rhewl	10.7%
Rhos Street School	12%
Ysgol Pen Barras	1.6%
Ysgol Borthyn	23.6%
Ysgol Carreg Emlyn	n/a
Ysgol Gellifor	4.1%
Ysgol Llanbedr	0%
Ysgol Bro Cinmeirch	4.8%
Ysgol Llanfair DC	8.6%
<b>Local Authority- Total</b>	<b>21.2%</b>
<b>Wales- Total</b>	<b>20.5%</b>

*\*Newly established school*

#### 3.4 Additional Learning Needs Data (2014)

School Name	School Action	School Action Plus	Statemented
Ysgol Rhewl	*	*	*
Rhos Street School	*	6.3%	*
Ysgol Pen Barras	7.4%	3.7%	*
Ysgol Borthyn	20.6%	16.5%	6.2%
Ysgol Carreg Emlyn**	n/a	n/a	n/a
Ysgol Gellifor	*	*	*
Ysgol Llanbedr	*	*	*
Ysgol Bro Cinmeirch	*	10.4%	*
Ysgol Llanfair DC	16.9%	*	*
<b>Local Authority- Total</b>	<b>12.5%</b>	<b>12.8%</b>	<b>1.1%</b>
<b>Wales- Total</b>	<b>15.1%</b>	<b>8.8%</b>	<b>1.7%</b>

*\*However as a result of very small cohorts in each year a meaningful comparison with local and national averages is not possible.*

*\*\*Newly established school- no data currently available*

## 4. Estyn

4.1. Estyn is the inspectorate for education and training in Wales. Estyn assess the performance of schools under an inspection framework, this changed in 2009/2010 to ask 3 key questions, a reduction from 7. Some of the schools named as an alternative have been assessed under the new framework, others have been assessed under the previous framework. The key questions for the previous and current framework are as follows;

<b>Current Framework Key Questions</b>
How good are the outcomes?
How good is the provision?
How good is the leadership and management?
<b>Judgements</b>
Excellent- Many strengths, including significant examples of sector leading practice.
Good- Many strengths and no important areas requiring significant improvement.
Adequate- Strengths outweigh areas for improvement.
Unsatisfactory- Important areas for improvement outweigh strengths.

<b>Previous Framework</b>
How well do learners achieve?
How effective are teaching, training and assessment?
How well do the learning experiences meet the needs and interests of learners and the wider community?
How well are learners cared for, guided and supported?
How effective are leadership and strategic management?
How well do leaders and managers evaluate and improve quality and standards?
How efficient are leaders and managers in using resources?
<b>Gradings</b>
Grade 1: Good with outstanding features
Grade 2: Good features and no important shortcomings
Grade 3: Good features outweigh shortcomings
Grade 4: Some good features, but shortcomings in important areas.
Grade 5: Many important shortcomings.

4.2. An overview of the reports for schools assessed under the new framework are provided below;

School	Ysgol Rhewl	Rhos Street School	Ysgol Pen Barras	Ysgol Borthyn	Ysgol Clocaenog (Carreg Emlyn)	Ysgol Cyffylliog (Carreg Emlyn)	Ysgol Bro Cinmeirch
Date	May 2011	March 2013	May 2011	March 2014	October 2012	March 2011*	Nov' 2011
Key Question 1	Good	Good	Good	Adequate	Good	Adequate	Good
Key Question 2	Good	Good	Good	Adequate	Good	Adequate	Good
Key Question 3	Good	Good	Good	Adequate	Good	Adequate	Good
Current Performance	Good	Good	Good	Adequate	Good	Adequate	Good
Improvement Outlook	Good	Excellent	Good	Adequate	Good	Adequate	Good

\*Ysgol Cyffylliog received a monitoring visit in November 2013, it was found that sufficient progress had been made with regard to the recommendations made during the core visit in March 2011 and was subsequently removed from the list of schools that need significant improvement.

4.3. An overview of the reports for the schools assessed under the previous framework are provided below;

School	Ysgol Gellifor	Ysgol Llanbedr	Ysgol Llanfair DC
Date	February 2010	June 2009	June 2010
Key Question 1	Grade 2	Grade 2	Grade 2
Key Question 2	Grade 2	Grade 2	Grade 2
Key Question 3	Grade 1	Grade 3	Grade 1
Key Question 4	Grade 1	Grade 2	Grade 2
Key Question 5	Grade 2	Grade 3	Grade 2
Key Question 6	Grade 2	Grade 4	Grade 2
Key Question 7	Grade 2	Grade 2	Grade 2

The summary of the most recent Estyn report for each school not already summarised in the main document are below:

### Ysgol Borthyn

Current Performance	Prospects for improvement	Recommendations
<p>The current performance of the school is adequate because:</p> <ul style="list-style-type: none"> <li>most pupils are making good progress;</li> <li>the school provides a caring environment where each child is valued and supported;</li> <li>pupils enjoy school, are eager to learn and are</li> </ul>	<p>Prospects for improvement are adequate because:</p> <ul style="list-style-type: none"> <li>standards in key stage 2 have improved over time;</li> <li>many staff recently appointed to leadership roles have made good progress in</li> <li>developing their area of responsibility during their short time in post;</li> </ul>	<p>R1 Improve standards so that more pupils achieve the higher than expected outcome 6 in the Foundation Phase, and all pupils achieve as well as they are capable</p> <p>R2 Improve standards of writing in key stage 2</p> <p>R3 Ensure that teachers give regular feedback so that pupils know how well they</p>

<p>actively involved in the life of the school; and</p> <ul style="list-style-type: none"> <li>most lessons are interesting and engage pupils well.</li> </ul> <p>However:</p> <ul style="list-style-type: none"> <li>although pupils generally make good progress, standards of writing remain low in key stage 2;</li> <li>pupils' use of Welsh outside of Welsh lessons is limited;</li> <li>teachers do not consistently give pupils feedback on how well they have done and what they need to do to improve; and</li> <li>leaders are not planning for pupils to develop their skills progressively enough.</li> </ul>	<ul style="list-style-type: none"> <li>recent initiatives have led to improvements in the provision for pupils and the outcomes they achieve; and</li> <li>support for staff new to teaching and those new to leadership is of good quality.</li> </ul> <p>However:</p> <ul style="list-style-type: none"> <li>targets and actions for improvement are not linked to pupil outcomes enough;</li> <li>middle leaders are not yet confident in the requirements of their roles and this limits their impact on pupil outcomes; and</li> <li>weaknesses remain in the planning and monitoring of the curriculum.</li> </ul>	<p>have done and what they need to do to improve</p> <p>R4 Improve the planning for skills to ensure that pupils build their skills progressively as they move through the school</p> <p>R5 Ensure that middle leaders are accountable for their roles, using detailed job descriptions that include participation in monitoring their areas of responsibility</p> <p>R6 Ensure that targets for school improvement are focused on improving outcomes for pupils</p> <p>R7 Ensure that the curriculum meets the National Curriculum requirements for Welsh second language</p> <p>R8 Amend the timetable to meet recommendations for teaching time in each key stage</p>
-----------------------------------------------------------------------------------------------------------------------------------------------------------------------------------------------------------------------------------------------------------------------------------------------------------------------------------------------------------------------------------------------------------------------------------------------------------------------------------------------------------------------------------------------------------------------------------------------------------------------------	--------------------------------------------------------------------------------------------------------------------------------------------------------------------------------------------------------------------------------------------------------------------------------------------------------------------------------------------------------------------------------------------------------------------------------------------------------------------------------------------------------------------------------------------------------------------------------------------------------------------------	--------------------------------------------------------------------------------------------------------------------------------------------------------------------------------------------------------------------------------------------------------------------------------------------------------------------------------------------------------------------------------------------------------------------------------------------------------------------------------------------------------------------------------------------------------------------------------------------------------------------------------------------------------------------------

### Ysgol Clocaenog

Current Performance	Prospects for improvement	Recommendations
<p>The school is good because:</p> <ul style="list-style-type: none"> <li>pupils achieve good standards;</li> <li>the school provides a range of interesting and varied learning experiences that meet pupils' needs;</li> <li>teaching is of good quality;</li> <li>effective leadership and an inclusive ethos create the best possible conditions for every</li> </ul>	<p>Prospects for improvement are good because:</p> <ul style="list-style-type: none"> <li>there is a clear vision that is conveyed successfully to staff, pupils, governors and parents;</li> <li>the school knows its own performance well;</li> <li>the headteacher, staff and governors are committed to continuous improvement;</li> </ul>	<p>R1 Improve the independent learning skills of pupils in the Foundation Phase.</p> <p>R2 Improve the standards of writing in English and Welsh of a minority of pupils in key stage 2.</p> <p>R3 Develop pupils' self-evaluation strategies further in key stage 2 so that they become more aware of what they need to do to improve their work.</p>

<p>individual to develop and thrive; and</p> <ul style="list-style-type: none"> <li>• partnerships with parents and the local community are a strength.</li> </ul>	<ul style="list-style-type: none"> <li>• planning for improvement focuses on raising standards; and</li> <li>• there is a willingness to continue to work with other schools in the cluster as an effective learning community.</li> </ul>	
--------------------------------------------------------------------------------------------------------------------------------------------------------------------	--------------------------------------------------------------------------------------------------------------------------------------------------------------------------------------------------------------------------------------------	--

### Ysgol Cyffylliog

Current Performance	Prospects for improvement	Recommendations
<p>The school's current performance is adequate because:</p> <ul style="list-style-type: none"> <li>• all pupils make appropriate progress during their time at the school;</li> <li>• attendance is very good and pupils enjoy coming to school;</li> <li>• pupils enjoy a good range of interesting activities;</li> <li>• equal opportunity is provided for all pupils in an inclusive school;</li> <li>• the results of end of key stage 2 assessments have been inconsistent;</li> <li>• reading and writing skills in Welsh at key stage 2 are adequate;</li> <li>• the more able pupils are not challenged sufficiently to reach their potential.</li> <li>• planning for teaching the skills and also the arrangements for assessment and assessment for learning are adequate, and</li> </ul>	<p>The school's prospects for improvement are adequate because:</p> <ul style="list-style-type: none"> <li>• the commitment of the headteacher and staff to the pupils and school is sincere;</li> <li>• parents and governors are very supportive of the work of the school;</li> <li>• the school has good links with a wide range of partners;</li> <li>• progress in response to the recommendations of the last inspection has been inconsistent;</li> <li>• a number of the school's managerial procedures do not have enough impact on improving pupils' standards.</li> </ul>	<p>R1. improve reading and writing skills in Welsh at key stage 2;</p> <p>R2 . ensure that the more able pupils reach their potential in all aspects of their work;</p> <p>R3. improve the assessment and assessment for learning arrangements at key stage 2;</p> <p>R4. improve self-evaluation and planning for improvement arrangements, and</p> <p>R5. Comply fully with the requirements for safeguarding children by providing training for all members of staff.</p>



<ul style="list-style-type: none"> <li>the school does not conform fully with the requirements for safeguarding children.</li> </ul>		
--------------------------------------------------------------------------------------------------------------------------------------	--	--

### Ysgol Bro Cinmeirch

Current Performance	Prospects for improvement	Recommendations
<p>Ysgol Bro Cinmeirch's current performance is good because:</p> <ul style="list-style-type: none"> <li>most pupils are making good progress during their period at the school;</li> <li>there is an excellent ethos that contributes very effectively to attendance and</li> <li>high standards of behaviour, and a feeling of staff and pupils' pride in their Welshness;</li> <li>planning, teaching and assessment are robust; and</li> <li>the whole staff work together well and effectively in a way that positively influences pupils' achievements.</li> </ul>	<p>The school's prospects for improvement are good because:</p> <ul style="list-style-type: none"> <li>the headteacher has a clear vision and she conveys that vision successfully to staff, pupils and governors;</li> <li>the school knows its own performance well; and</li> <li>there is excellent collaboration with partners to improve the provision.</li> </ul>	<p>In order to improve further, the school should:</p> <p>R1 ensure a further increase in the proportion of pupils who reach the higher levels;</p> <p>R2 provide more opportunities for pupils to develop into independent learners; and</p> <p>R3 further develop pupils' understanding of what they need to do in order to improve their own work.</p>

### Ysgol Gellifor

Summary	Recommendations
<p>Ysgol Gellifor is a good school with many strengths. There are outstanding features in the high quality learning experiences provided and in the way in which learners are cared for, guided and supported. Learners benefit from the staff's dedication and commitment. Good working relationships exist</p>	<p>In order to improve the school further, the head teacher, governors and members of staff need to:</p> <p>R1 ensure consistency in the presentation of learners' work;</p> <p>R2 further develop assessment for learning so that learners clearly understand what they need to do to improve; and</p>

<p>throughout the school. This creates a positive and encouraging approach to learning that has a positive effect on learners' achievement. They make good progress and achieve well. The school has made good progress since the previous inspection.</p>	<p>R3 refine the process of self-evaluation and school improvement so that it is sharply focused on learners' achievement.</p>
------------------------------------------------------------------------------------------------------------------------------------------------------------------------------------------------------------------------------------------------------------	--------------------------------------------------------------------------------------------------------------------------------

### Ysgol Llanbedr

Summary	Recommendations
<p>Ysgol Llanbedr succeeds in creating a happy and supportive learning environment where pupils feel secure and respected. Relationships between members of staff and pupils are very positive. Most pupils develop as polite, friendly and confident individuals. They display good attitudes to learning. This has a positive impact on the standards they achieve.</p>	<p>In order to improve the school in the areas inspected, the staff and governing body need to:</p> <p>R1 raise standards by addressing the shortcomings in Welsh second language and art and design at Key stage 2;</p> <p>R2 improve pupils' bilingual competence;</p> <p>R3 improve curriculum planning to ensure pupils' better progress in all subjects;</p> <p>R4 improve communications with parents/carers;</p> <p>R5 develop the self-evaluation system to consistently and rigorously monitor standards of work and the quality of learning.</p>

### Ysgol Llanfair Dyffryn Clwyd

Summary	Recommendations
<p>Ysgol Llanfair Dyffryn Clwyd is a good school and a very happy establishment. The school's distinct feature is the sense of a family community and closeness to learners. There is an element of excellence in the learning experiences offered to learners and this has a positive impact on their achievement. They make progress, achieve well and become confidently bilingual.</p>	<p>In order to improve, the school needs to:</p> <p>R1 maintain the good standards whilst aiming for excellence;</p> <p>R2 raise ICT standards in key stage 2;</p> <p>R3 develop learners' self-assessment strategies in order that they become more independent learners;</p> <p>R4 ensure consistency in comments on learners' work, giving them clear guidance on what they need to do to improve their work;</p> <p>R5 complete and align work plans for the new curriculum in key stage 1 and 2;</p>

	R6 strengthen the monitoring system to focus more specifically on the achievement of learners.
--	------------------------------------------------------------------------------------------------

## 5. Condition and Suitability

5.1. EC Harris were instructed in 2010 to undertake condition surveys on all schools in Wales as part of the Welsh Governments 21<sup>st</sup> Century Schools Programme. The condition categories for all the schools listed are displayed in the table below;

School	Overall Condition
Ysgol Pen Barras	C
Ysgol Rhewl	B
Ysgol Gellifor	B
Ysgol Carreg Emlyn was	
<i>Ysgol Clocaenog</i>	B
<i>Ysgol Cyffylliog</i>	B
Ysgol Borthyn	B
Ysgol Llanbedr	B
Ysgol Bro Cinmeirch	B
Rhos Street School	B
Ysgol Llanfair DC	B

5.2. Denbighshire County Council condition and suitability ratings for 2014 are as follows;

School	Condition Grade	Suitability Grade
Ysgol Pen Barras	B	C
Ysgol Rhewl	B	B
Ysgol Gellifor	B	B
Ysgol Carreg Emlyn was		
<i>Ysgol Clocaenog</i>	B	B
<i>Ysgol Cyffylliog</i>	C	C
Ysgol Borthyn	B	A
Ysgol Llanbedr	B	B
Ysgol Bro Cinmeirch	B	A
Rhos Street School	A	B
Ysgol Llanfair DC	B	C

### Key:

- A – Good (No deterioration)
- B – Satisfactory (Minor deterioration)
- C – Poor (Major deterioration)
- D – Bad (Life expired)